




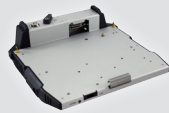
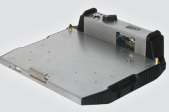
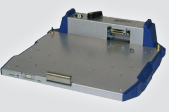


# Panasonic CF-31 Computer and Havis Docking Information

## Compatibility Matrix

This matrix shows compatibility for Havis Docking Stations with Panasonic CF-29, CF-30, & CF-31 Computers.

Havis Docking Station			Computer Model		
			CF-29	CF-30	CF-31
Summer 2010		<b>DS-PAN-111</b> <i>Silkscreened Silver Top Plate with Black Sides &amp; Front Facing Ports</i>	No	Yes <sup>1</sup>	Yes
Fall 2009 - Present		<b>DS-PAN-102</b> <i>Silver Top Plate with Black Sides &amp; Rear Facing Ports</i>	Yes	Yes	No <sup>3</sup>
Spring 2009 - Fall 2009		<b>DS-CFX2</b> <i>Silver Top Plate with Black Sides &amp; Rear Facing Ports</i>	Yes	Yes	No <sup>3</sup>

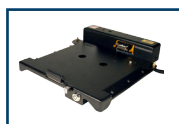
Products Discontinued - No Longer Supported		<b>DS-PAN-101</b> <i>Silver Top Plate with Gray Sides &amp; Front Facing Ports</i>	No	Yes	Yes <sup>2</sup>
		<b>DS-CFX2-P</b> <i>Silver Top Plate with Blue or Gray Sides &amp; Front Facing Ports</i>	No	Yes	Yes <sup>2</sup>
		<b>DS-CFX2-L*</b> <i>Available through ADVANCED EMER PRODUCTS (Connecticut)</i>	Yes	Yes	No <sup>3</sup>
		<b>DS-CFX</b> <i>Silver Top Plate with Black Sides &amp; Rear Facing Ports</i>	Yes	Yes	No <sup>3</sup>
		<b>DS-CFX-P</b> <i>Silver Top Plate with Blue or Gray Sides &amp; Front Facing Ports</i>	No	Yes	Yes <sup>2</sup>

\* - DS-CFX2-L requires a DS-DA-601 (Rugged Communications Hub II) for multiple USB & Ethernet connectivity.

Note 1: Only one of the two Ethernet Ports (USB 2.0) will work when a CF-30 computer is docked.

Note 2: If you are currently using a 90W power supply (LPS-101) with this Docking Station, Havis and Panasonic recommend installing a 120W power supply (LPS-104) in order to use a High level CF-31 computer.

Note 3: Full functionality of computer cannot be guaranteed by Havis, as the user may experience mixed results based on the set up, configuration, and power management needs of the system & computer.



All docking stations with black top plates **ARE NOT** recommended to be used with the Panasonic CF-31 computer.

