



Havis, Inc.
75 Jacksonville Road
Warminster, PA 18974
T 800-524-9900 F 215-957-0729
www.havis.com

INSTALLATION INSTRUCTIONS

PT-A-103

2015-2020 FORD TRANSIT REAR STEP INSTALL

TOOLS REQUIRED:

Standard wrench set

Metric and Standard socket set

Ratchet

Impact Gun

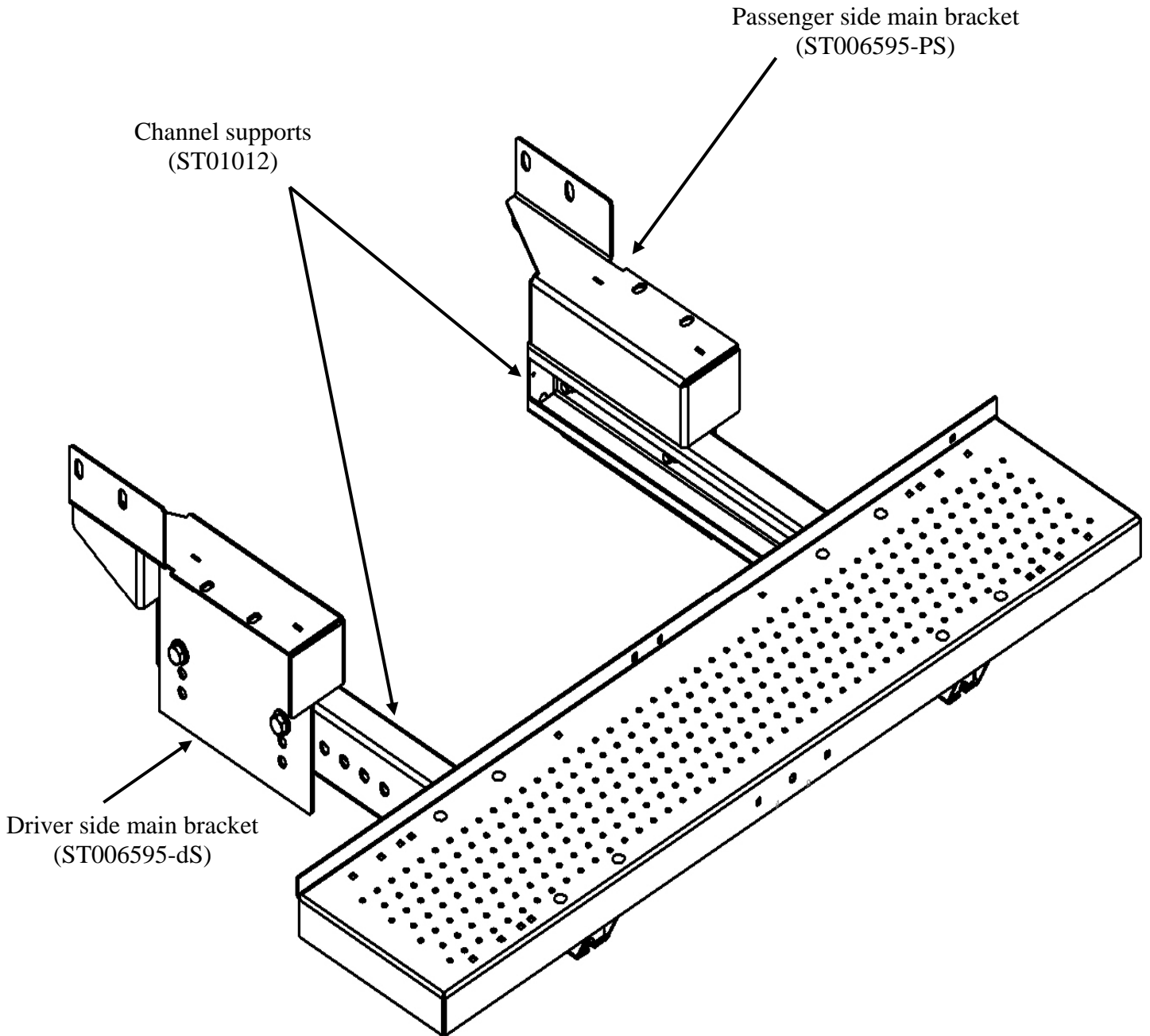
HARDWARE:

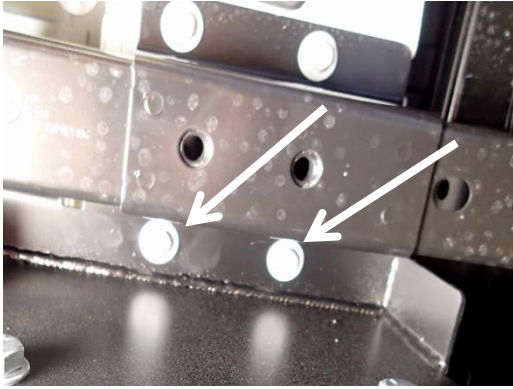
<u>QTY</u>	<u>DESCRIPTION</u>	<u>PART#</u>
1	Driver side main bracket	ST006595-DS
1	Passenger side main bracket	ST006595-PS
2	Channel support	ST01012
4	1/2" Nylock nut	GSM30020
4	1/2"x 3.5" Bolt	GSM330055
16	1/2" Washer	GSM31009
4	1/2" Nut	GSM30011
4	1/2" Split lock washer	GSM31030
4	1/2"x 1.5" Bolt	GSM33050

Always!

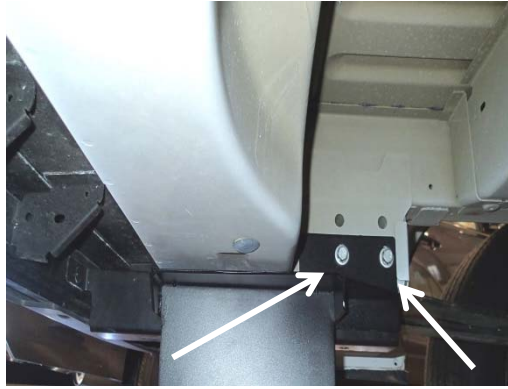
- Read all instructions before installing any Havis, Inc. products.
- Check for obstructions (Wires, brake lines, fuel tank, etc.) before drilling any holes!
- Use hardware provided with install kit

PT-A-103 Step Assembly





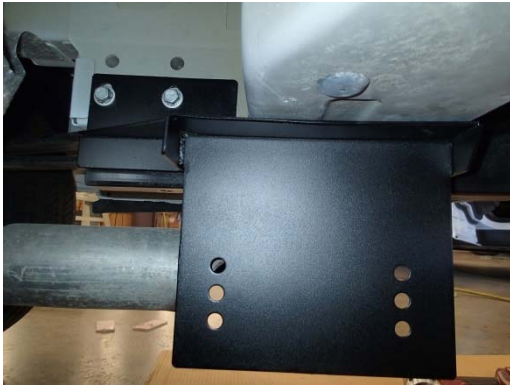
On the driver side remove the two bolts located on the inside of the rear frame rail. Keep bolts for re-install in the next step.



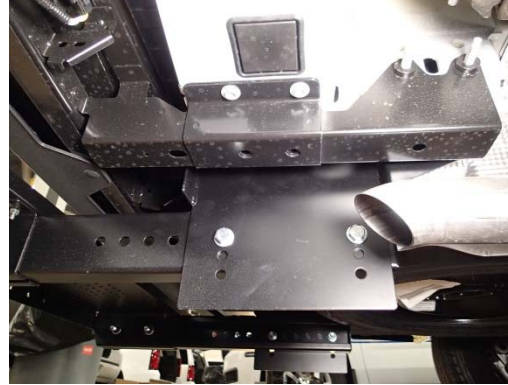
Remove the two bolts shown in the picture and install the Main bracket using the four (4) removed factory bolts.



On the passenger side you may need to temporarily remove the rear heat shield mounting rivet. Reattach shield after bracket is in place.



Repeat the mounting procedure for the driver side bracket



Determine the height you want to set the rear step and insert two (2) 1/2" x 1.5" bolts, (4) 1/2" washers, and (2) nylock nuts.



Repeat process for driver side and make sure channel supports are level and even.



Loosen the eight (8) 1/4" nylock nuts from the step assembly and slide the step onto the previously install channel supports using four (4) 1/2" x 3.5" bolts, (8) 1/2" washers and four (4) 1/2" nylock nuts.



Tighten all hardware and check to make sure the step is even and level.



Installation is now complete