

INSTALLATION INSTRUCTIONS

C-DMM-2015 Dash Monitor Mount

2014-2020 Dodge Durango

TOOLS REQUIRED:

Ratchet Wrench Dash panel removal tool Socket Set Phillips screwdriver

MOUNT BRACKET PARTS and HARDWARE:

Installation parts with * come loose in hardware kit bag. Other parts are preassembled to frame.

<u>QTY</u>	<u>DESCRIPTION</u>	<u>PART#</u>
1	Main dash frame mount bracket	CM009400
2	Upper mount bracket	CM009333 *
2	Lower side support bracket	CM009334 *
1	Pivot / display mount bracket	MT-0320-SA *
1	Tilt swivel hinge	GSM22005
1	VESA rotator plate	CM010471
1	PVC washer	CM010648
2	1/4" x 3/4" Carriage bolts	GSM32000
2	1/4" Nylock nut	GSM30016
2	1/4" Flat washer	GSM31005
2	Nylon 1/16" spacer washer	CM86600
1	M8 hex nut SS	GSM30113
1	M8 lock washer SS	GSM31217
1	Vinyl cap (.50" high x .312 - .375 id)	GSM41127
2	Pull through bumper (3mm head)	GSM21109
1	Push in bumper (10mm head)	GSM21108
2	M5 x 10mm Thread forming screw	GSM33774
1	Warning label	CM005196
2	10-32 KEPS nut	GSM30028 *
4	10-32 X 1/2 Phillips pan head machine screw	GSM33118 *
4	# 10 Flat washer	GSM31003 *

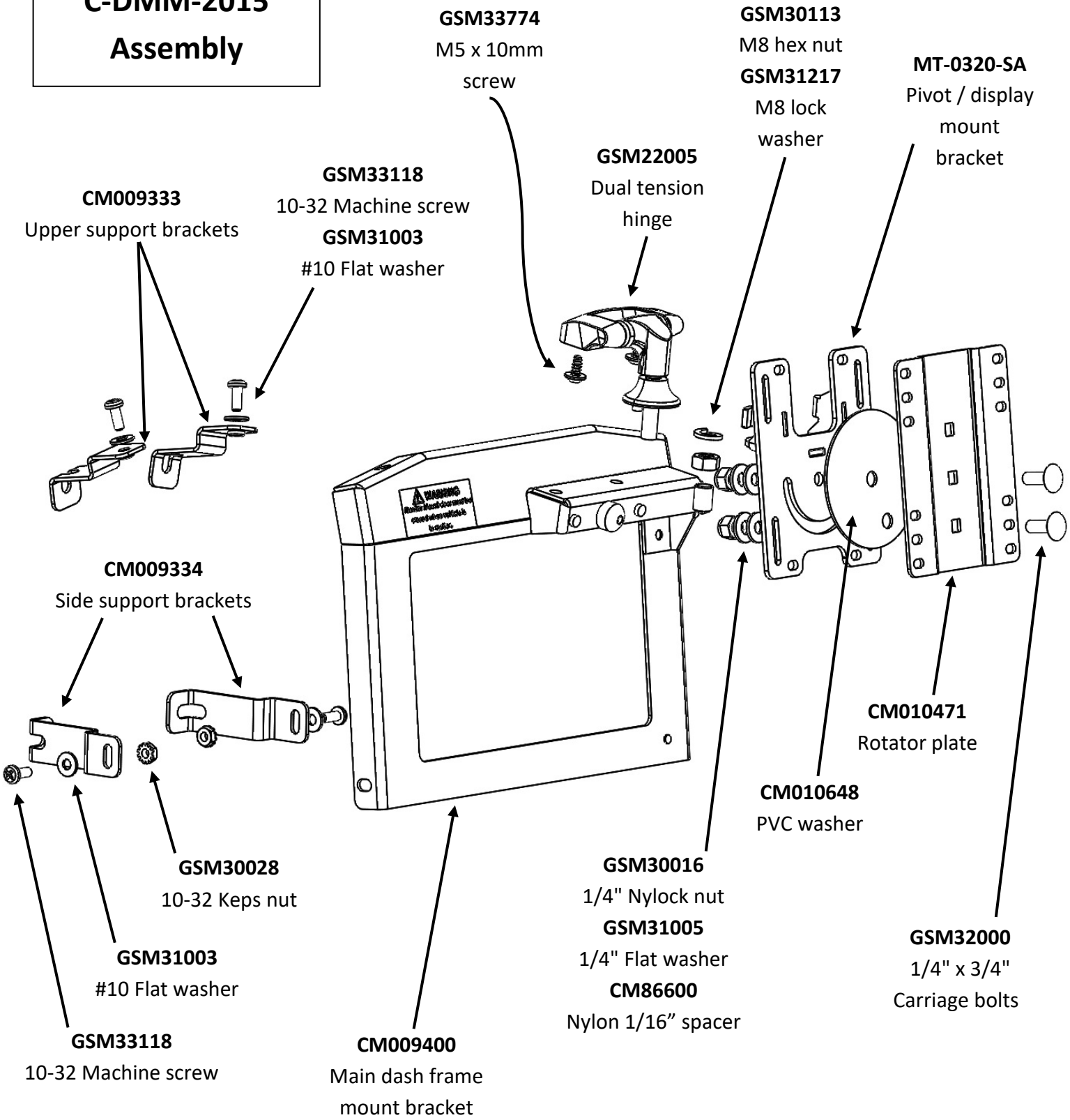
Notes:

1. The C-DMM-2000 series Dash Monitor Mount brackets are specifically designed to work with Havis, Inc, model # TSD-101 Touch Screen Display.
2. The display mount bracket includes a VESA 75 hole pattern that can also be used for some light weight tablet docking station applications under 5 lbs. Acceptable positioning must be determined by end user.
3. The C-DMM-2015 will work with Havis, Inc. consoles made for the Dodge Durango.

Always!

- Read all instructions before installing any Havis, Inc. products.
- Use hardware provided with install kit

**C-DMM-2015
Assembly**





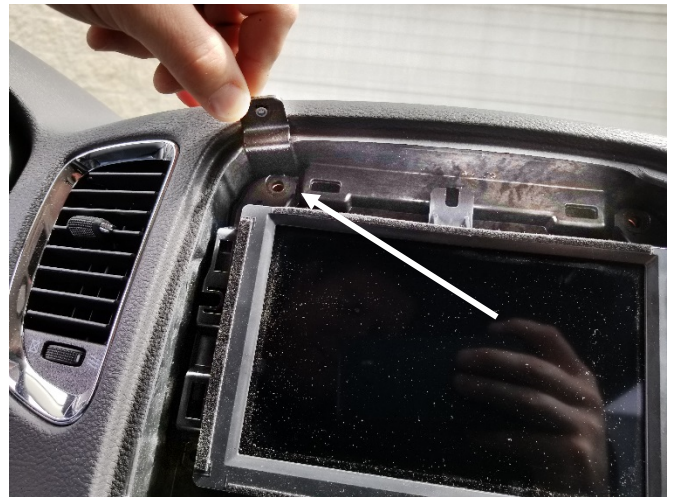
View of dash center instrument panel



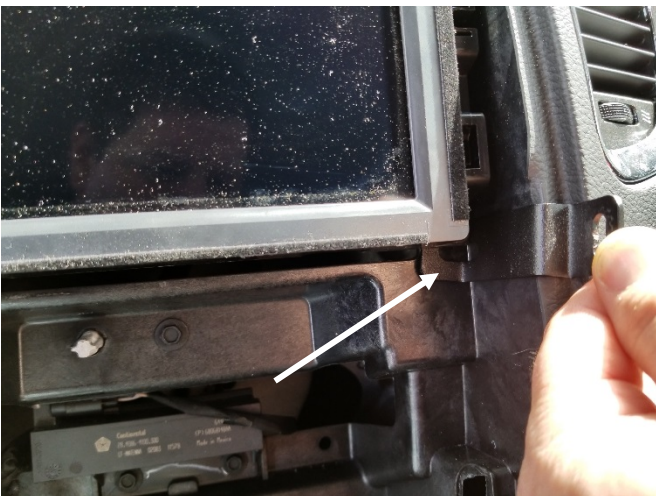
Carefully remove trim bezel / panel assembly using plastic panel tool.



Unplug panel assembly and set aside.



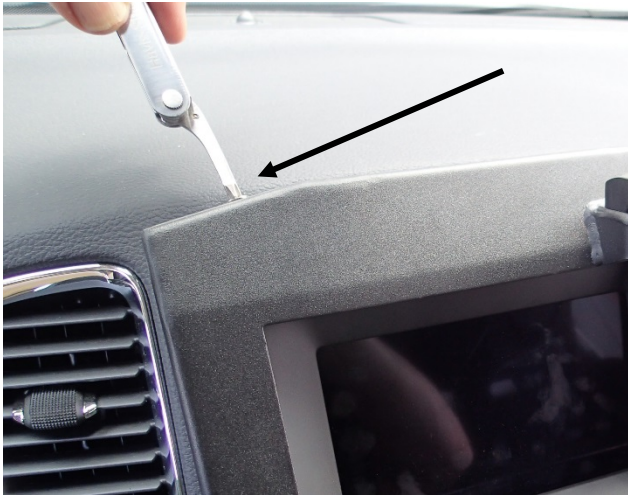
Remove (4) 7mm head fasteners around OEM screen. Attach the upper support brackets behind the OEM screen and reinstall with original fasteners.



Repeat process for lower side support brackets



Carefully reinstall trim bezel / panel assembly with four brackets protruding out of gap between bezel and dash.



Attach the DMM frame to the upper brackets using 10-32 x 1/2" screws and flat washers.



Attach the DMM frame to the lower side brackets using 10-32 x 1/2" screws, flat washers, and Keps nuts.



Connect harnesses to the back of the TSD-201 display. It is important to also double wire tie the harnesses to provide sturdy strain relief for the plugs.

Refer to TSD-201 owner's manual for power and computer connection details.



Attach pivot / display mount bracket to display with M4 x 0.7 x 10mm Phillips head machine screws, lock washers and flat washers. Display mount hardware is included with TSD-201 hardware kit.



Attach bracket with display to the tilt swivel hinge with M8 hex nut and lock washer. Tighten nut and attach vinyl cap on M8 bolt threads.



Carefully run and strain relief wiring. Refer to TSD-201 owner's manual for power and computer connection details. Installation is now complete.