

# INSTALLATION INSTRUCTIONS

## C-DMM-2023 Swing up Dash Monitor Mount

### 2021-2022 Ford F-150 XL, Responder & SSV

***\*\*Does NOT work with OEM top center dash speaker.***

***OEM top Tray must be removed and not used. \*\****

#### **TOOLS REQUIRED:**

Ratchet Wrench

Dash panel removal tool

Open End Wrench - 7/16"

Socket Set

Phillips screwdriver

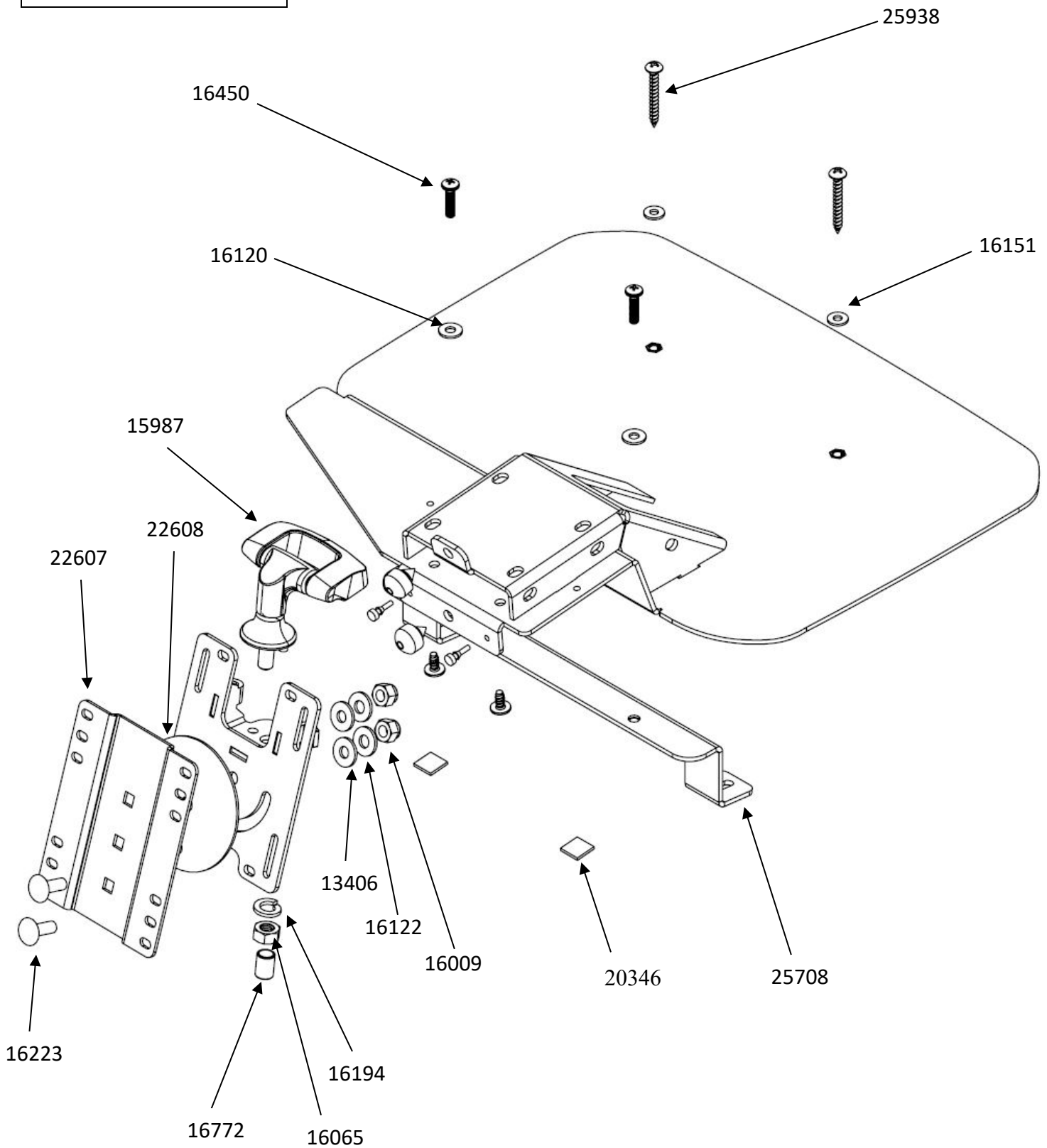
#### **PARTS and MOUNTING HARDWARE:**

<b><u>QTY</u></b>	<b><u>DESCRIPTION</u></b>	<b><u>PART#</u></b>
1	PVC Spacer	22608
1	VESA 75 swivel adaptor	22607
1	XL trim upper mounting bracket	25708
2	#8 x 1.5" Pan Head screw	25938
2	1/16" Nylon washer	13406
2	1/4" Nylock nut	16009
2	Rubber feet with PSA	20346
2	10-32 x 3/4" Machine screws	16450
2	#10 Flat washer	16120
2	#8 Flat washer	16151
1	M8 split lock washer	16194
1	M8 nut	16065
1	Rubber cap	16772

#### **Always!**

- Read all instructions before installing any Havis, Inc. products.
- **Check for obstructions (Wires, brake lines, fuel tank, etc.) before drilling any holes!**
  - Use hardware provided with install kit

## C-DMM-2023





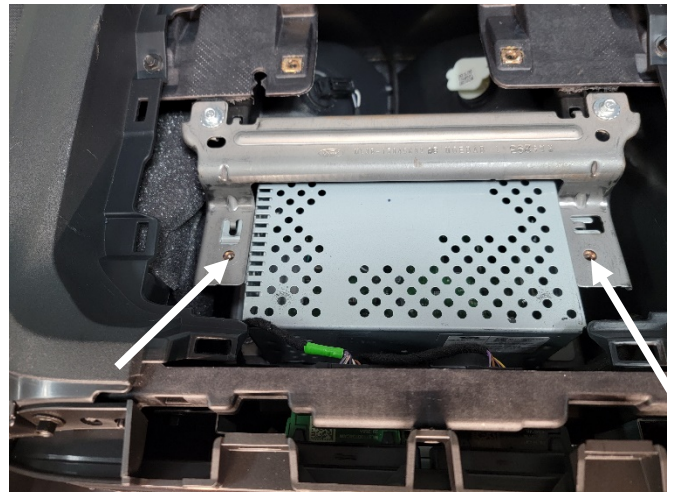
View of dash prior to install.



Remove (2) 7mm head fasteners at top center dash.

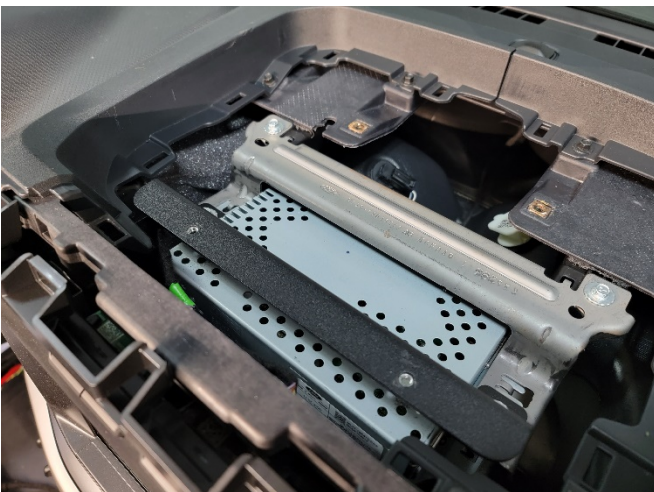


Lift off upper trim panel assembly.  
This panel will not be reused.



Remove (2) 7mm head fasteners from the upper mounting area.

***On the Responder F-150, skip this step.***



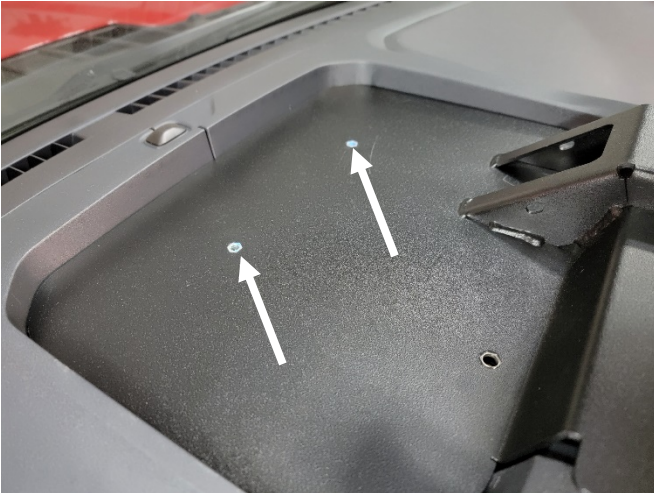
Install upper mounting bracket using previously removed OEM fasteners.

***On the Responder F-150, skip this step***



Place C-DMM-2023 frame onto dash.





Attach forward section of DMM tray to dash using (2) #8 x 1.5" sheet metal screws and flat washers



Attach rear section of DMM tray to dash using (2) 10-32 x 3/4" Machine screws and flat washers



Connect harnesses to the back of the TSD-201 display. It is important to also double wire tie the harnesses to provide sturdy strain relief for the plugs.



Attach pivot / display mount bracket to display with M4 x 0.7 x 10mm Phillips head machine screws, lock washers and flat washers. Display mount hardware is included with TSD-201 hardware kit.



Attach bracket with display to the tilt swivel hinge using M8 hex nut and lock washer. Tighten nut and attach vinyl cap on M8 bolt threads.



Installation is now complete