

INSTALLATION INSTRUCTIONS

C-DMM-3003 Flip Up Dash Monitor Mount

2015-2020 Chevy Tahoe PPV and Retail models

(Works with OEM "My Touch" display-storage pocket)

TOOLS REQUIRED: *(some tools are not needed for all vehicle installations)*

- Socket set - metric & standard
- Drill & drill bits
- Tape measure
- Plastic notching tool
- Phillips screwdriver
- Trim removal tools
- Pencil / Marker

PARTS and HARDWARE:

QTY:	DESCRIPTION:	PART #:
1	Main dash mount bracket	CM009349
1	Driver side mounting bracket	CM009402
1	Passenger side mounting bracket	CM009403
1	VESA rotator plate	CM010471
2	1/4" x 3/4" Carriage bolts	GSM32000
1	PVC washer (2.875" diameter)	CM010648
2	Nylon 1/16" spacer washer	CM86600
2	1/4" Nylock nut	GSM30016-1
2	1/4" Flat washer	GSM31005
4	10-32 x 1/2" Machine screw	GSM33118
4	10-32 Keps nut	GSM30028

Notes:

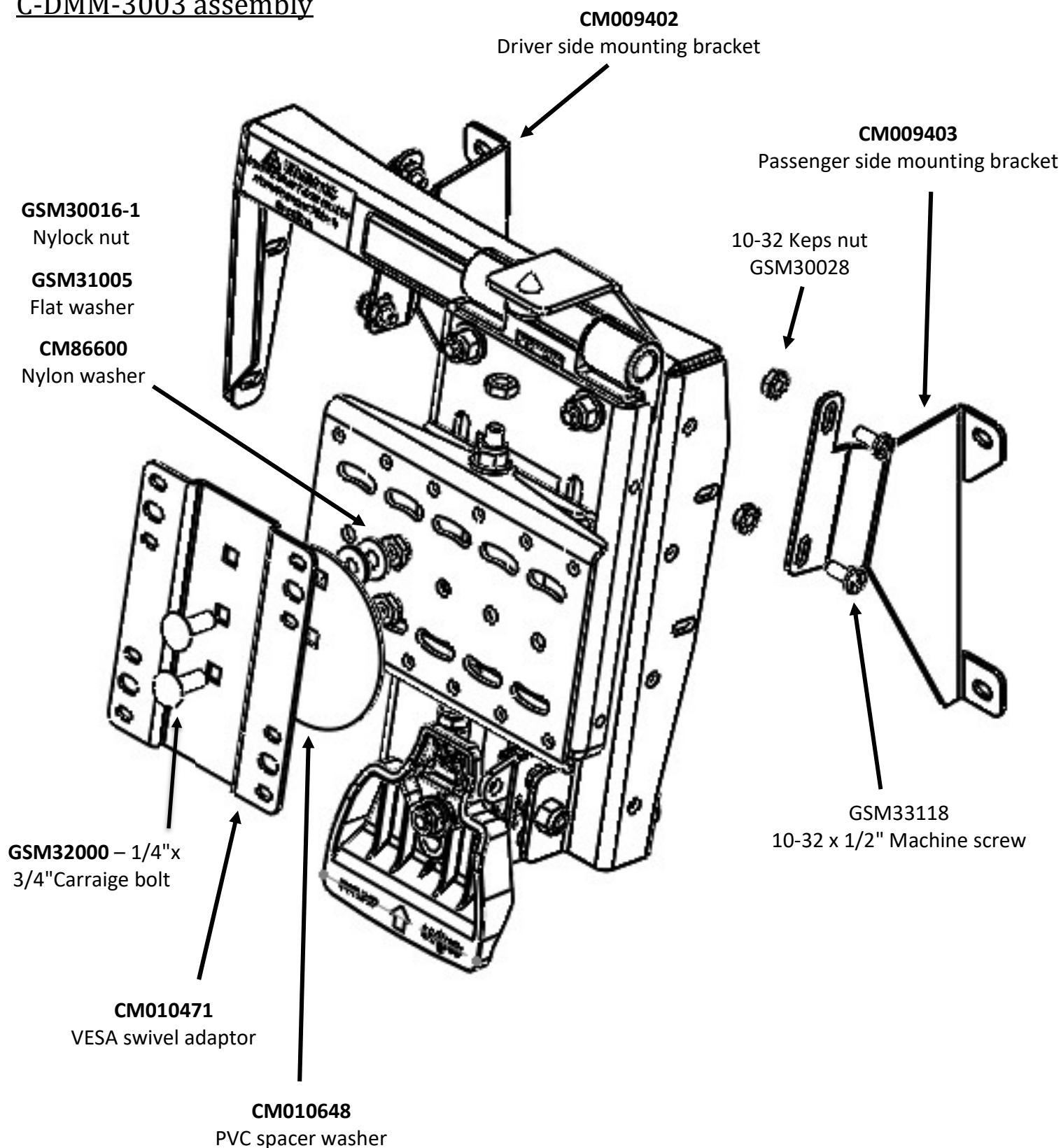
The C-DMM-3000 swivel plate accepts C-MM-301 offset bracket used with C-MM-2XX adaptors. C-MM-2XX series adaptor brackets are not needed for most VESA 75 and other Havis Docking Station mounting applications.

CM010471 VESA rotator plate gives additional positioning options, but is not required depending on mounting preference.

ALWAYS!

- Read all instructions before installing any Havis, Inc products.
- Use hardware provided with install kit

C-DMM-3003 assembly





OEM Dash Prior to installation



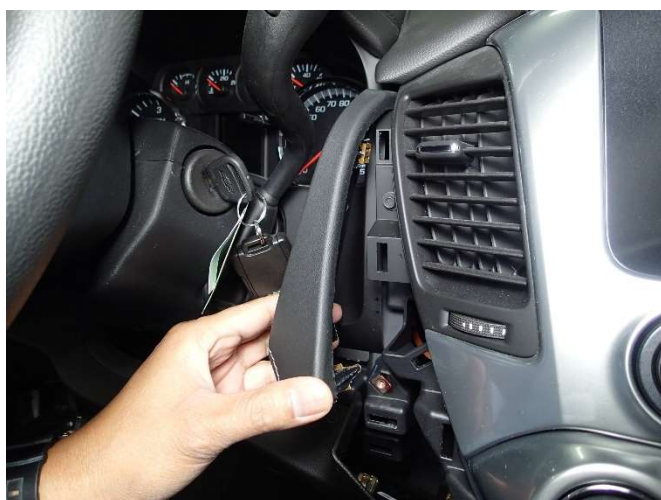
Pull back the driver side lower dash panel to gain access and remove side trim screw (7mm socket)



Remove rubber cover in lower accessory pocket to gain access and remove two (2) lower dash panel screws. (7mm socket)



Pull lower dash panel towards you to remove.



Remove driver side upper dash panel.



Insert a flat blade panel removal tool and remove the panel above the glove box.



Carefully remove (unsnap) center trim bezel around touch screen and climate controls



Remove three (3) screws from the vent housing and remove the housing. Repeat for passenger side. (7mm socket)



On the 2017 and older Tahoe, (2) plastic tabs will need to be trimmed. This can be done with a simple snip from a pair of diagonal cut pliers



Remove two (2) screws on each side next to the OEM screen. Install side support brackets using OEM hardware.



Loosely place the center trim bezel up to the dash and mark the plastic area around the upper side brackets to be notched.



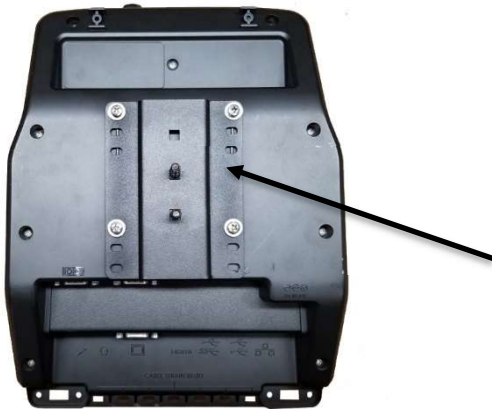
Carefully notch trim bezel accordingly and reinstall back into dash. Re-install all vents and dash trim.
File or Dremel tool works well for notching plastic.



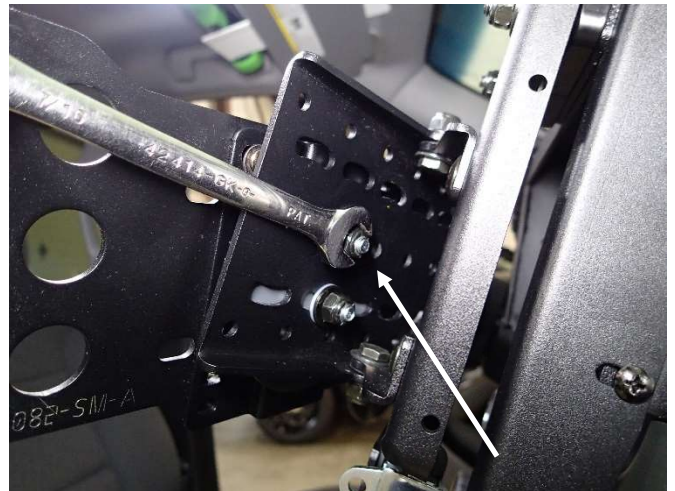
Re-install all trim and dash panels. It helps to raise the screen to snap in the trim around the dash.



Attach the C-DMM-3003 using (4) 10-32 x 1/2" screws and #10 Keps nuts.



Position VESA plate on back of Device as desired. Attach VESA plate with carriage bolts to the back of the dock. The gray PVC washer will go between this bracket and the DMM swivel plate.



Determine desired position for your specific computer and attach to DMM swivel plate using 1/4" x 3/4" carriage bolts, PVC spacer, nylon washers, steel washers, and nylock nuts. Tighten so that the dock rotates smoothly.



Run wiring as desired and test equipment.



Installation is now complete