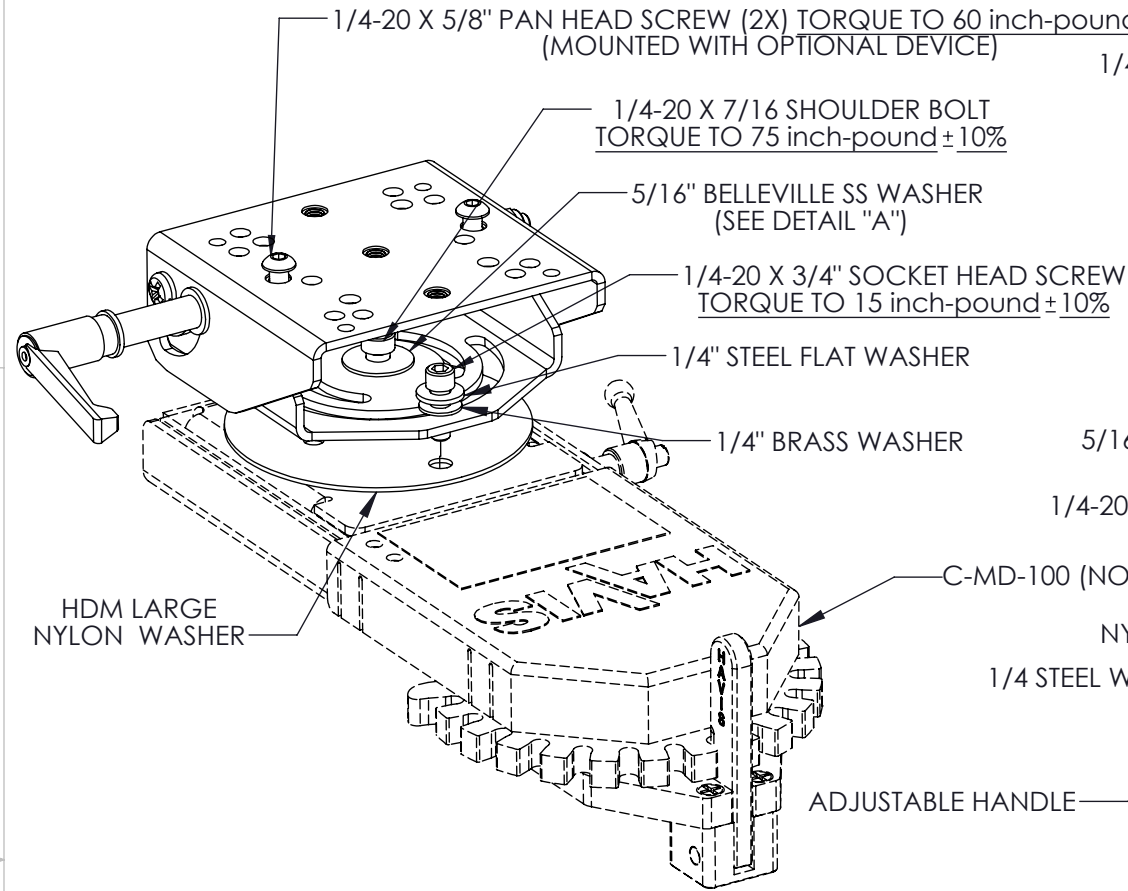
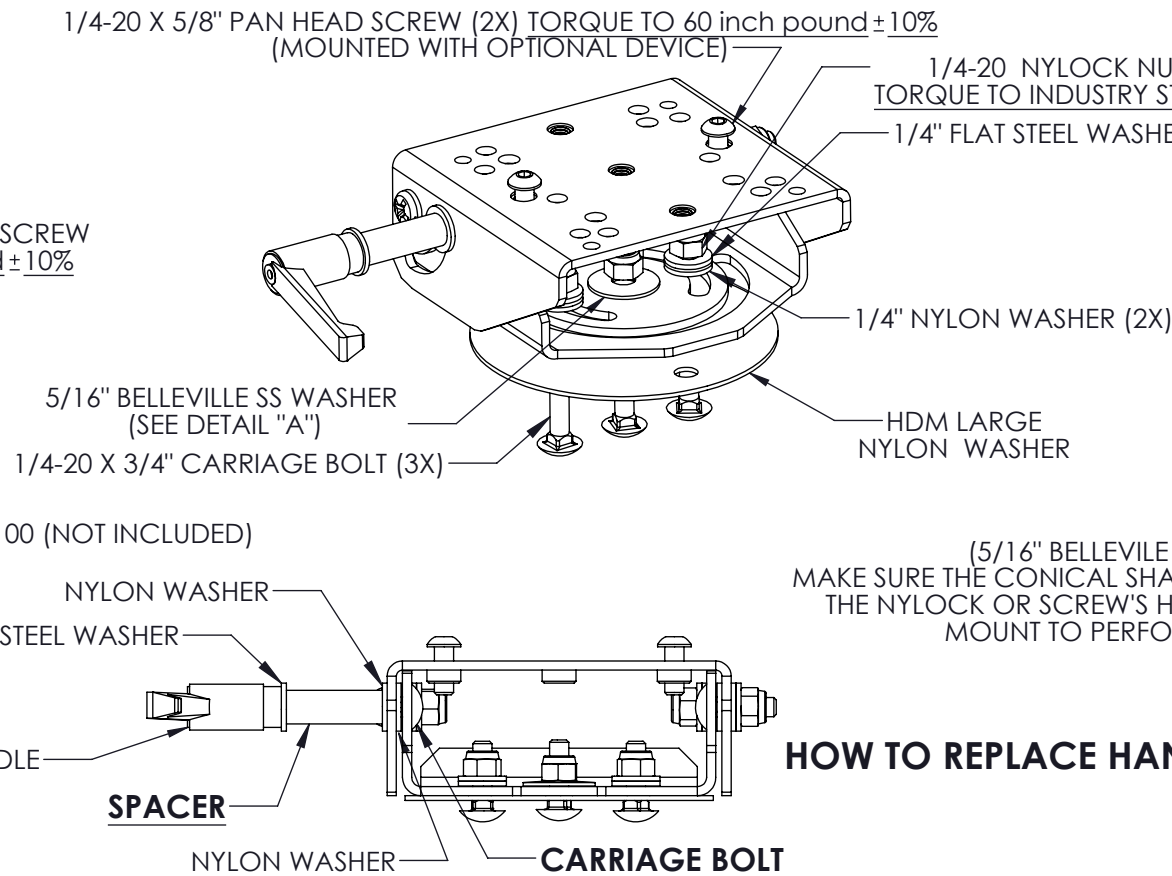


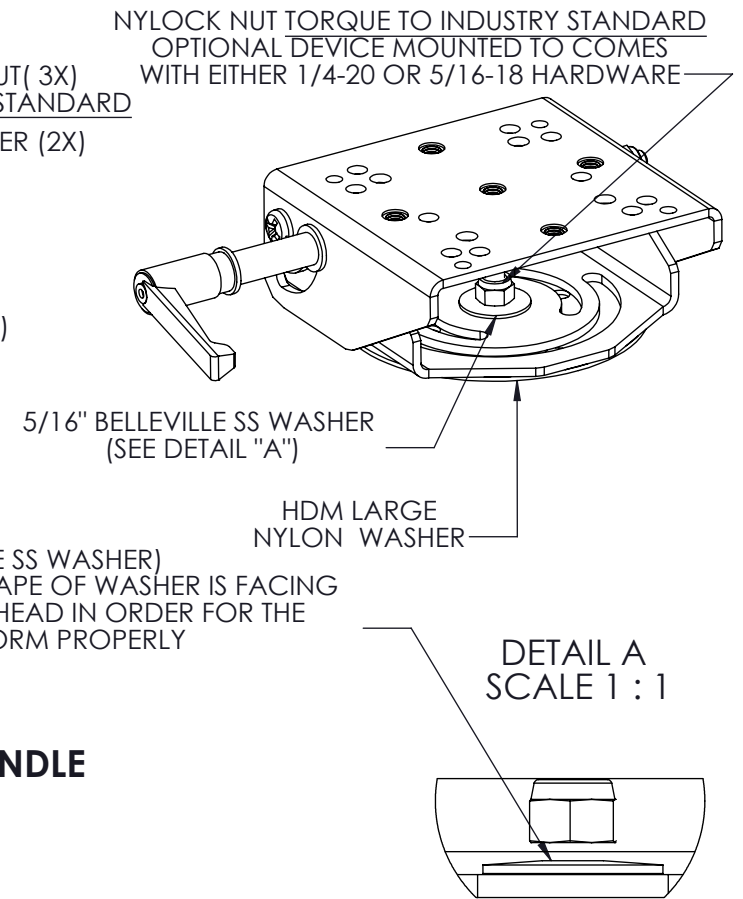
**INSTALLATION - OPTION 1
(180 DEG. ROTATION)
STANDARD ASSEMBLY**



**INSTALLATION - OPTION 2
(90 DEG. ROTATION)**



**INSTALLATION - OPTION 3
(360 DEG. ROTATION)
NOT RECOMMENDED FOR ANY DEVICE
HEAVIER THAN A KEYBOARD**



Note: (If C-MD-200 is already pre-mounted on a motion device (C-MD-100 series), skip to step 4.)

General installation Guide:

1. Place HDM Large Nylon Washer on top of motion device or pole assembly or any desired mounting module. Align mounting holes as shown.
2. Place any MD-200 series on top of large HDM Large Nylon Washer making sure to align holes in MD-200 with holes in HDM large Nylon Washer.
3. Arrange supplied hardware specified dictated by desired mounting application with recommended Torque guide.
4. Mount Docking Station on top of Upper Bracket of C-MD-200 series and secure using (2) 1/4-20 Pan Head Screws. Torque as shown.

Note: (If Adjustable handle is not needed, skip to step 4.)

Replacing Handle installation Guide:

1. Remove adjustable handle and carriage bolt, but keep steel washer, nylon washer and adjustable handle for re-use.
2. Replace spacer and carriage bolt with appropriate length or desired usage.
3. Re-arrange hardwares and assemble adjustable locking mechanism as shown.
4. If no handle is required, removed adjustable handle, carriage bolt and spacer. Replace carriage bolt with 3/4" length. In lieu of adjustable handle change with supplied 1/4-20 nylock nut. Keep nylon washer and steel washer assembled as it shown.

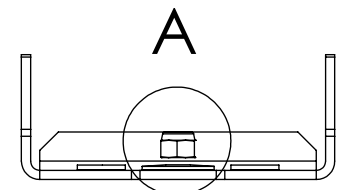
HARDWARE KIT CONTENTS:

DESCRIPTION	QTY.
BOLT, 1/4-20 x 3/4 CARRIAGE ZP	3
NUT 1/4-20 NYLOCK, BLK, ZP, GRD 5	5
WASHER, 1/4 FLAT ZP	3
SPACER 1/16" NYLON	2
1/4-20 X 7/16 SHOULDER BOLT - 5/16" DIA X 1/4" L SHOULDER	1
SCREW - 1/4-20 X 3/4" SHCS	1
WASHER - 1/4" FLAT - .260" ID - 9/16" OD - .030"-.050" THK	1
WASHER, 5/16" BELLEVILLE SS	1
HDM LARGE PLASTIC WASHER	1
SCREW, PAN HEAD, 1/4-20 x 5/8	2
HANDLE REPLACEMENT KIT	
SPACER - LONG AND SHORT	2
CARRIAGE BOLT - LONG AND SHORT	2
NUT 1/4-20 NYLOCK, BLK, ZP, GRD 5	1
BOLT, 1/4-20 x 3/4 CARRIAGE ZP	1

<p>PROPRIETARY AND CONFIDENTIAL</p> <p>THE INFORMATION CONTAINED IN THIS DRAWING IS THE SOLE PROPERTY OF HAVIS, INC. ANY REPRODUCTION IN PART OR AS A WHOLE WITHOUT THE WRITTEN PERMISSION OF HAVIS IS PROHIBITED.</p> <p>STANDARD 98-000004 SPEC'S REQUIRED:</p>	<p>UNLESS OTHERWISE SPECIFIED:</p> <p>ALL DIMENSIONS ARE IN INCHES ALL THREADS ARE IN UNC-2A/2B OR UNF-2A/2B AFTER COATING AND TOLERANCES ARE: .XX .XXX ANGLES ±.02 ±.010 ±.5 DEG</p>	<p>HAVIS HAVIS, INC. 75 JACKSONVILLE RD. WARMINSTER, PA. 18974 1-800-524-9900</p>	
	<p>DO NOT SCALE DRAWING</p> <p>MATERIAL: SEE BOM</p>	<p>TITLE: MD-200 SERIES MOTION DEVICE</p>	
<p>DESIGNED BY: Paul Melaya</p> <p>DRAWN BY: Paul Melaya</p> <p>CHECKED BY: -</p> <p>REF # N/A</p>	<p>FINISH: N/A</p> <p>AREA(SQ. IN.): 711.34</p>	<p>SIZE B</p> <p>DWG. NO. C-MD-201-203-INST</p>	<p>REV 3/23/10</p>
<p>WEIGHT (LB): 8.18</p>		<p>SCALE: 1:5</p>	<p>SHEET 1 OF 1</p>

WARNING: ALL HAVIS INC. PRODUCTS ARE DESIGNED WITH SAFETY OF USE AND INSTALLATION IN MIND. HOWEVER, IT IS THE SOLE RESPONSIBILITY OF THE OWNER/OPERATOR OF A VEHICLE USING HAVIS INC. MOUNTING AND DOCKING EQUIPMENT, TO INSURE THAT THE EQUIPMENT IS INSTALLED SO THAT IT WILL NOT INTERFERE WITH VEHICLE OPERATION, INTERFERE WITH SAFETY DEVICES, OBSTRUCT VIEW OF DRIVING CONDITIONS, OR IN ANY WAY DEGRADE OCCUPANT SAFETY. IMPROPER INSTALLATION CAN CAUSE SERIOUS INJURY IN THE EVENT OF AN ACCIDENT. INSTALLATION SHOULD ONLY BE PERFORMED BY QUALIFIED PROFESSIONALS. COMPUTERS AND MOTION DEVICES MUST BE MOVED TO AND STOWED/SECURED IN THEIR SAFE DRIVING POSITIONS BEFORE OPERATING VEHICLE.

**END VIEW DETAIL OF
5/16" BELLEVILLE SS WASHER**



HOW TO REPLACE HANDLE

(5/16" BELLEVILLE SS WASHER)
MAKE SURE THE CONICAL SHAPE OF WASHER IS FACING THE NYLOCK OR SCREW'S HEAD IN ORDER FOR THE MOUNT TO PERFORM PROPERLY

**DETAIL A
SCALE 1 : 1**

D

C

B

A

D

C

B

A