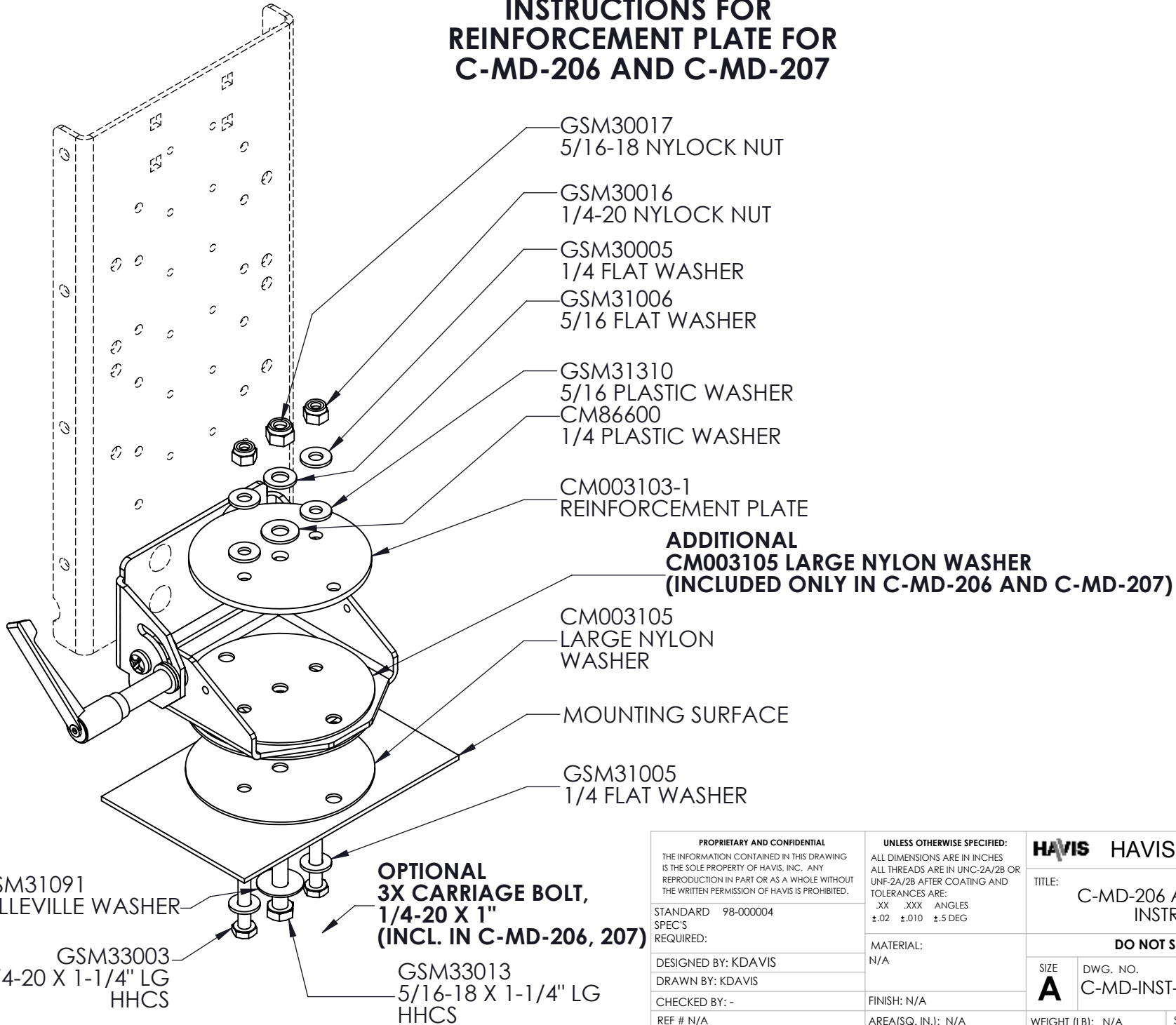


# INSTRUCTIONS FOR REINFORCEMENT PLATE FOR C-MD-206 AND C-MD-207



**ADDITIONAL  
CM003105 LARGE NYLON WASHER  
(INCLUDED ONLY IN C-MD-206 AND C-MD-207)**

**OPTIONAL  
3X CARRIAGE BOLT,  
1/4-20 X 1"  
(INCL. IN C-MD-206, 207)**

<p><b>PROPRIETARY AND CONFIDENTIAL</b> THE INFORMATION CONTAINED IN THIS DRAWING IS THE SOLE PROPERTY OF HAVIS, INC. ANY REPRODUCTION IN PART OR AS A WHOLE WITHOUT THE WRITTEN PERMISSION OF HAVIS IS PROHIBITED.</p> <p>STANDARD 98-000004 SPEC'S REQUIRED:</p> <p>DESIGNED BY: KDAVIS DRAWN BY: KDAVIS CHECKED BY: - REF # N/A</p>	<p><b>UNLESS OTHERWISE SPECIFIED:</b> ALL DIMENSIONS ARE IN INCHES ALL THREADS ARE IN UNC-2A/2B OR UNF-2A/2B AFTER COATING AND TOLERANCES ARE: .XX .XXX ANGLES ±.02 ±.010 ±.5 DEG</p>	<p><b>HAVIS HAVIS, INC.</b> 75 JACKSONVILLE RD. WARMINSTER, PA. 18974 1-800-524-9900</p>	
	<p>MATERIAL: N/A</p> <p>FINISH: N/A</p> <p>AREA(SQ. IN.): N/A</p>	<p>TITLE: C-MD-206 AND C-MD-207 INSTRUCTION</p> <p><b>DO NOT SCALE DRAWING</b></p>	
	<p>SIZE <b>A</b></p>	<p>DWG. NO. C-MD-INST-2</p>	<p>REV 2/14</p>
	<p>WEIGHT (LB): N/A</p>	<p>SCALE: 1:4</p>	<p>SHEET 1 OF 1</p>