

# INSTALLATION INSTRUCTIONS C-VS-1500-DUR-2

## 15” Vehicle Specific Console for 2021 -2023 Dodge Durango (SSV or Retail trim)

### NOTES:

- Does not have provisions for relocating OEM rear controls or extending ductwork in Retail or SSV console.
- Durango with V8 engine and trailer tow package includes an AWD control module. Optional bracket # C-AH-AWD-DUR is required for relocating this OEM module.

### TOOLS REQUIRED:

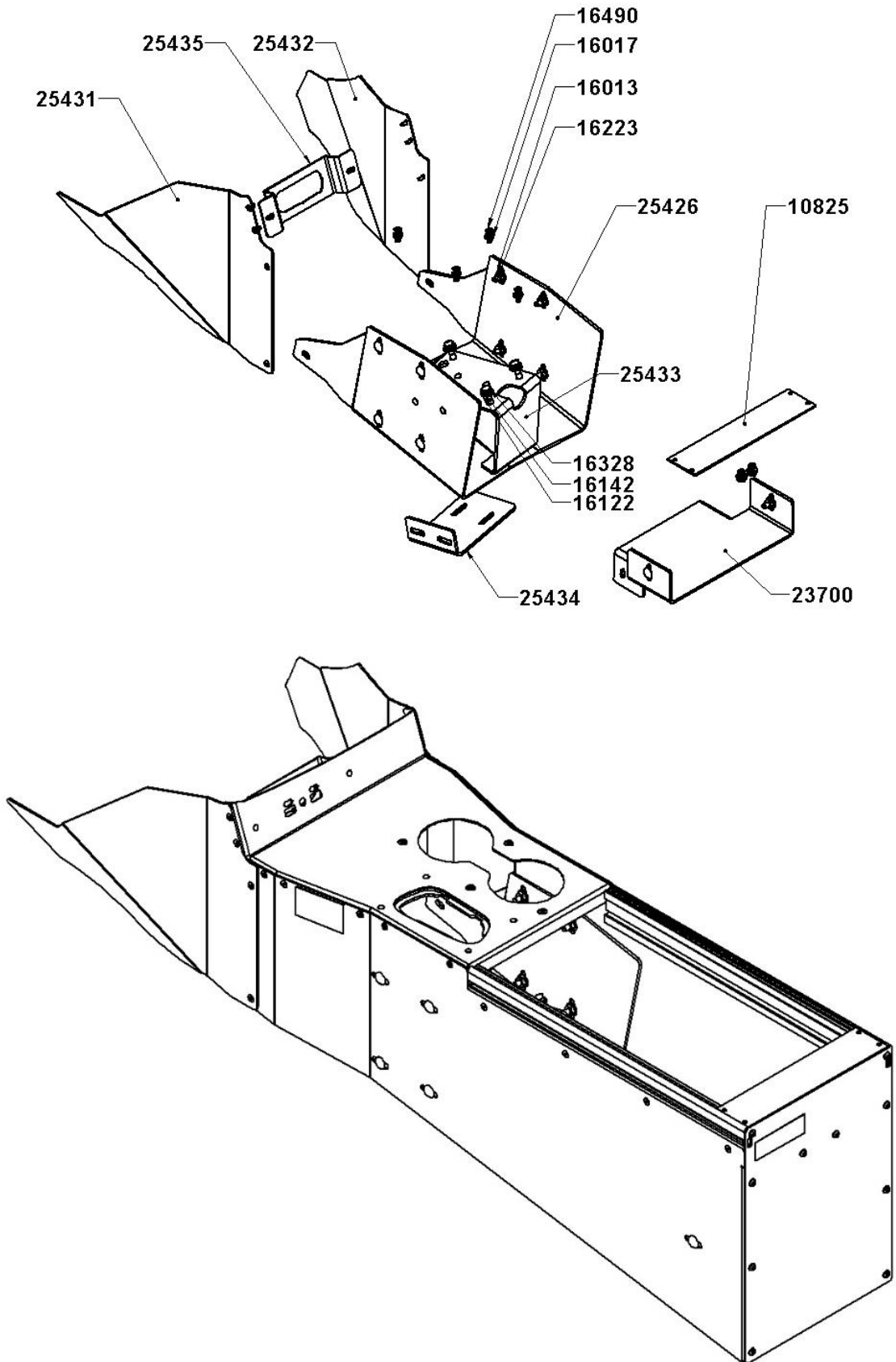
Phillips Screw Driver	T-20 Torx bit	Standard Socket set	3.5mm Allen wrench
Metric Socket set	Wire crimping tool	Wire cutters	Trim removal tool

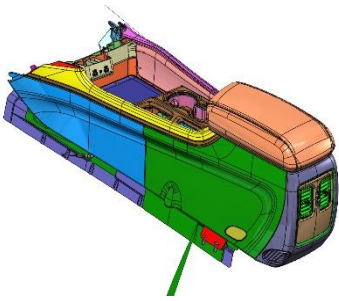
### **PARTS and MOUNTING HARDWARE:**

<u>QTY</u>	<u>DESCRIPTION</u>	<u>PART#</u>
1	Rear Mounting Bracket	23700
1	Front Mounting Bracket	25426
1	Driver Side Trim Panel	25431
1	Passenger Side Trim Panel	25432
1	Shifter Base Bracket	25433
1	Shifter Support Bracket	25434
1	USB Module Relocation Bracket	25435
1	¼-20 Nut Kit	25520
17	¼-20 Serrated Nuts	16013
8	10-32 Keps Nuts	16017
2	#10 Flat Washer	16120
4	¼” Flat Washer	16122
4	¼” Split Lock Washer	16142
10	¼-20 X ¾” Carriage Bolt	16223
4	¼-20 X 1-1/4” Hex Head Cap Screw	16328
2	10-32 X ½” Phillips Pan Head Screw	16399
8	8-18 x 3/8” Phillips Flat Head Screw	16425
4	10-32 X 3/4” Phillips Flat Head Screw	16490
1	2” Filler Plate	10825

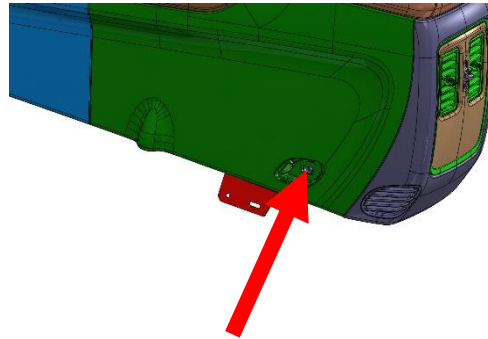
### Always!

- Read all instructions before installing any Havis, Inc. products.
- **Check for obstructions (Wires, brake lines, fuel tank, etc.) before drilling any holes!**
  - Use hardware provided with install kit

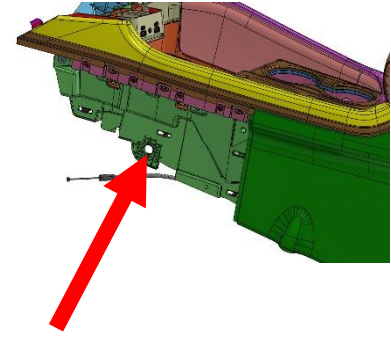




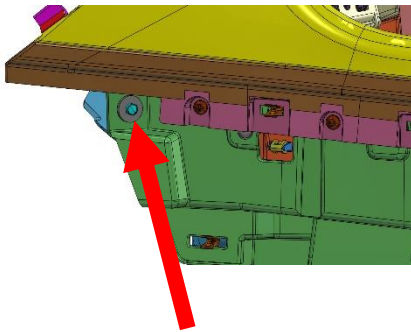
OEM Console prior to installation.



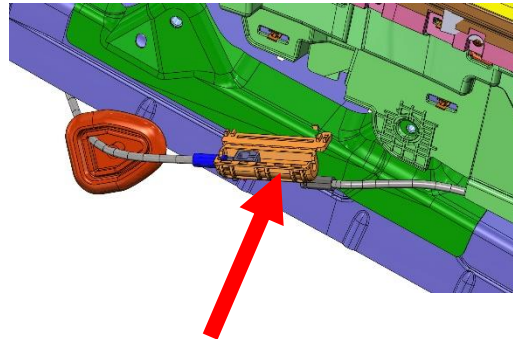
Remove OEM plastic cover both sides. Remove two (2) OEM screws that hold the console down. (10mm socket) Screws to be reused.



Unclip OEM front plastic sides. Remove two (2) OEM screws that hold the console down. (10mm socket) Screws to be reused.



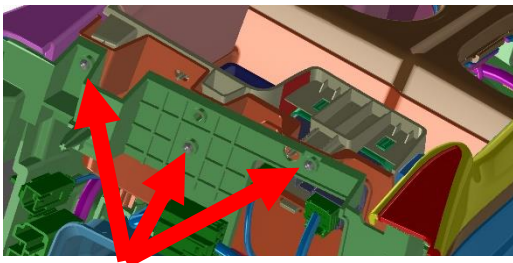
Remove two (2) OEM at forward lower dash. (7mm socket)



Open MPR Bracket and remove cable connection. Unplug all wire connectors. OEM console can now be removed.



Remove driver's side OEM trim



Unplug wiring and remove screws, to remove OEM USB module. This will be reused



Carefully pop up shifter boot and unplug sensor from rear of boot. Loose Allen head bolt and remove shifter handle from stalk. (3.5mm)



Carefully pop up the main plate OEM plate housing the cup holder and coin pocket. Unplug cup holder wires.



Remove screws (4x) and OEM cup holder. This will be reused



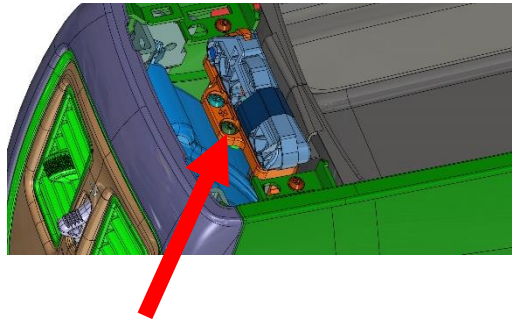
Unbolt shifter assembly from center console using 10mm socket and ratchet.



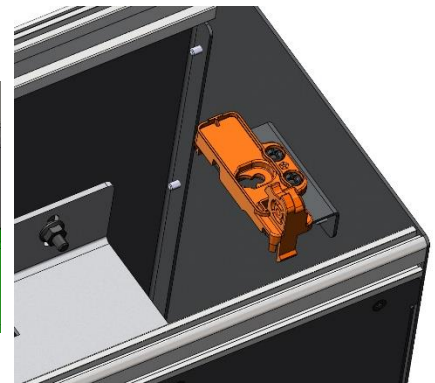
Unplug, remove shifter and set aside.



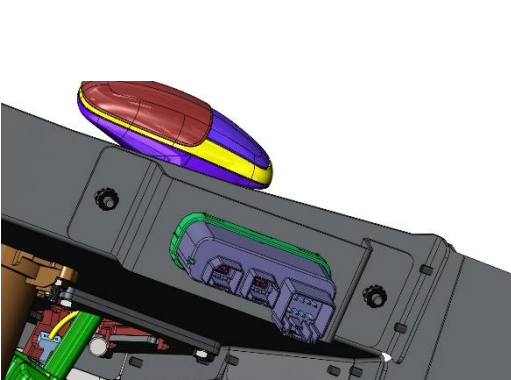
Flip up armrest and pop open trim panel to expose MPR bracket.



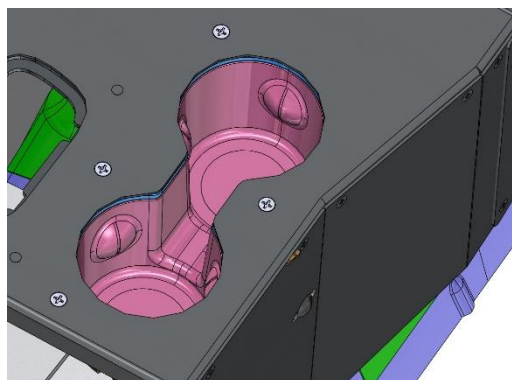
Remove screws (2x) and OEM manual park release. The MPR will be reused NOTE: There may be cable ties underneath the console holding it in place.



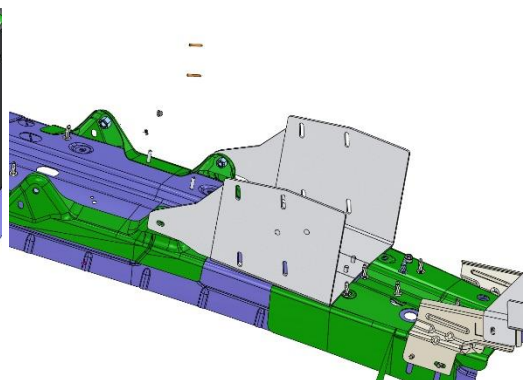
Attach OEM MPR to Havis console using two (2) 10-32 x 1/2" Phillip's head screws and keps nuts.



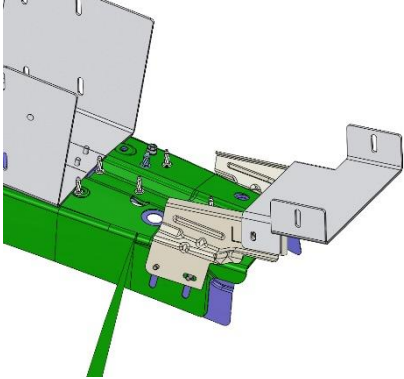
Attach OEM USB module to Havis console using supplied mounting bracket and two (2) 10-32 keps nuts.



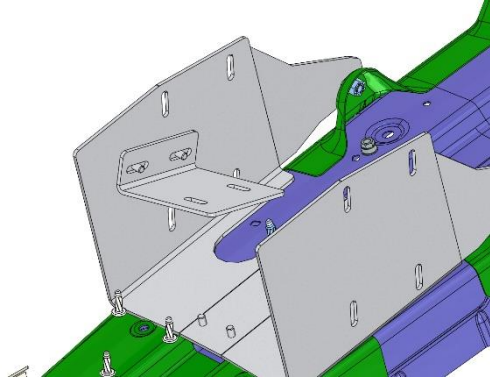
Attach OEM cup holder to Havis console using four (4) 10-32 x 3/4" Phillips flat head screws and keps nuts



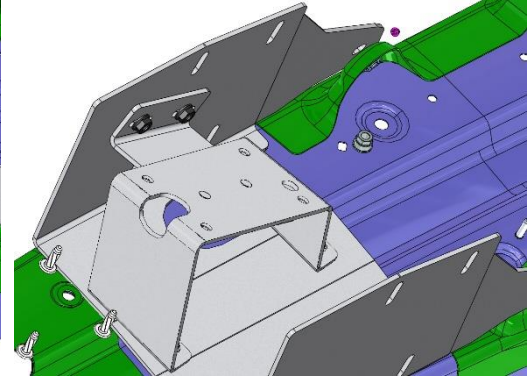
Position front mounting bracket and carefully route any wires underneath. NOTE: Ground wire may need to be removed and reattached to position bracket



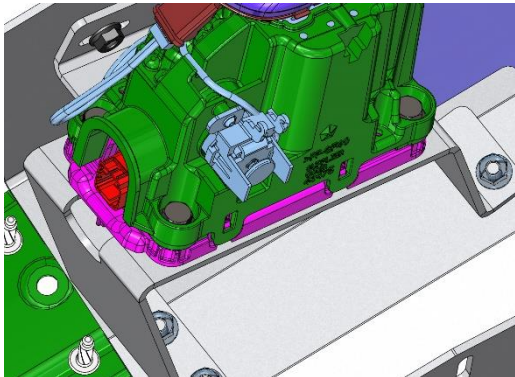
Position rear mounting bracket to OEM bracket. Attach front and rear brackets using OEM hardware. Fully tighten hardware



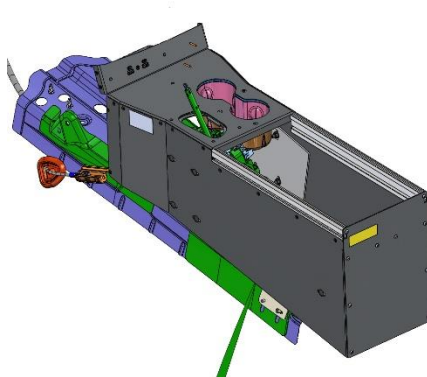
Loosely attach gear shift support bracket using two (2) ¼-20 serrated nuts



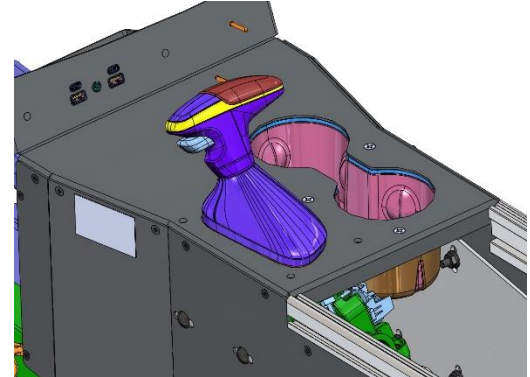
Attach gear shift base bracket using five (5) ¼-20 nuts



Attach OEM base shifter using four (4) ¼-20 x 1-1/4" HHCS, split lock washers and flat washers



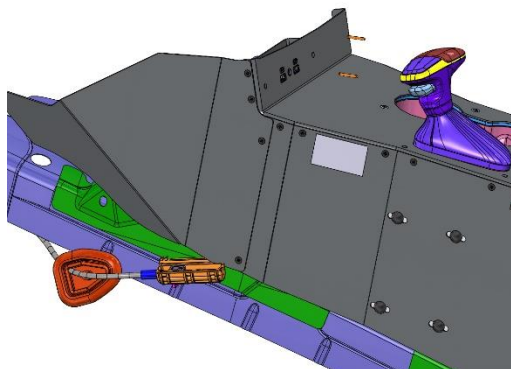
Slide main console into position. Angling over the shifter to ensure proper placement.



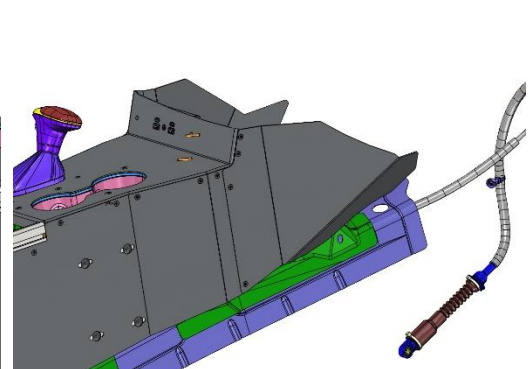
Slide shifter back on and plug in shifter boot to OEM harness. Tighten Allen head bolt to OEM shifter stalk. (3.5mm Allen wrench) Snap shifter boot down into shifter



Reattach MPR cable and OEM harnesses for the USB and cup holder.



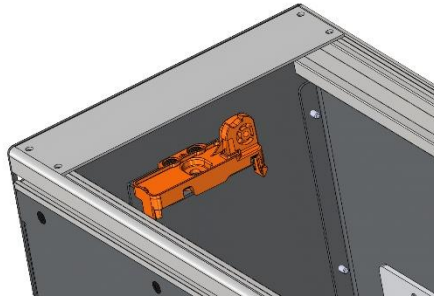
Attach driver side trim panel to console housing with # 8 x 1/4" flat head sheet metal screws.



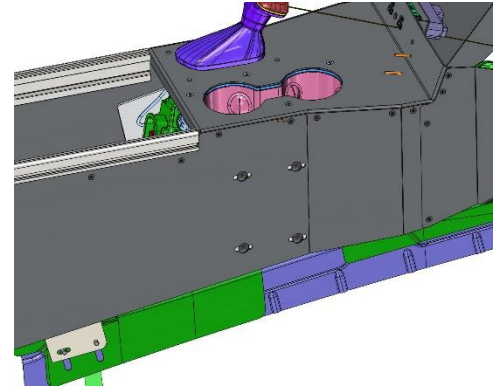
Attach passenger side trim panel to console housing with # 8 x 1/4" flat head sheet metal screws.



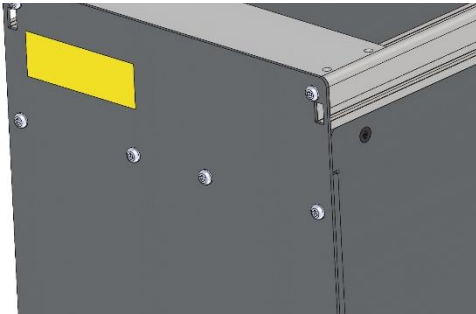
Fully tighten all hardware Run wiring as needed. Mount face plates and accessories into console with # 8 x 3/8" Torx head screws. Screws supplied with equipment



A 2" filler panel is supplied to cover the relocated MPR. Use if necessary



A side mount pole can be mounted using the four hole pattern shown.



Side mounted accessories can be fixed using the supplied 1/4-20 nut kit provided. Access the nut trak using the cutouts on the rear of the console.

**NOTE: This console currently does not have provisions for relocating OEM rear controls or extending ductwork in Retail or SSV console.**