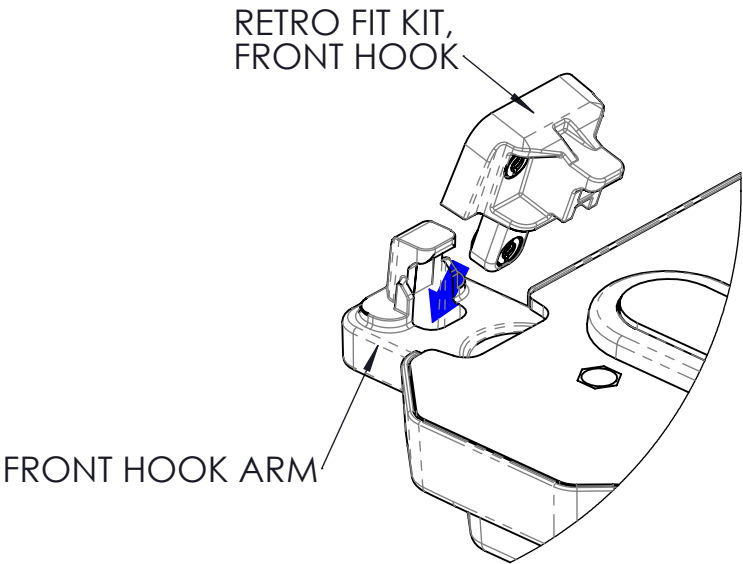
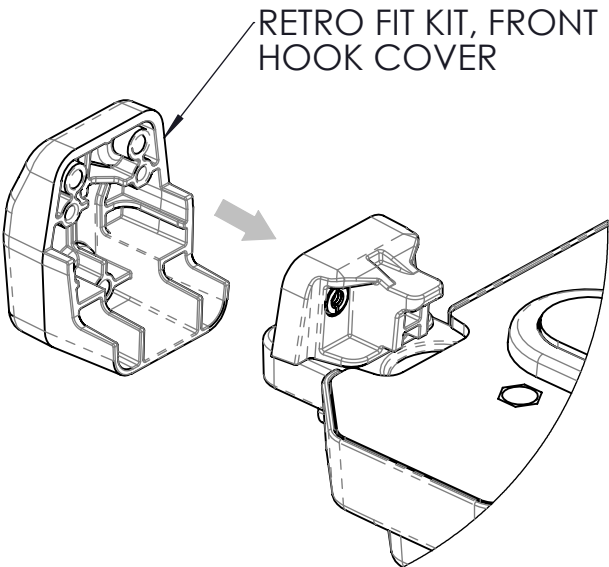


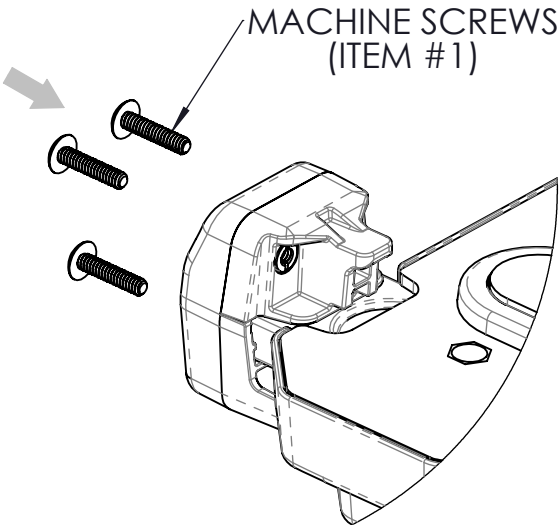
INSTALLATION INSTRUCTIONS:



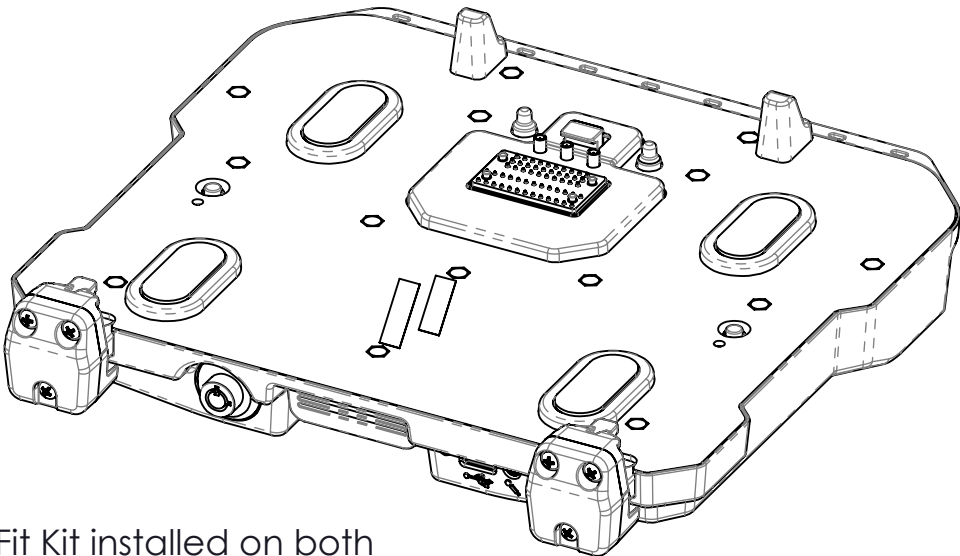
STEP 1: With the Front Hook Arms on the Docking Station extended, insert the Retro Fit Kit Front Hook into the opening of the Front Hook Arm as shown.



STEP 2: With the Retro Fit Kit Front Hook in place, attach the Retro Fit Kit Front Hook Cover as shown.



STEP 3: Attach with Machine Screws as shown, and torque to 8 in-lbs \pm 10%. Do not over tighten, as damage can occur.



STEP 4: With the Retro Fit Kit installed on both Front Hook Arms, place computer in Docking Station, and adjust arms as needed.

HARDWARE KIT CONTENTS:

ITEM #	QTY	DESCRIPTION	HAVIS PART ID	DRIVE STYLE
1	6	MACHINE SCREW, TRUSS HEAD, #6-32 X 0.625" L, w/PATCH	HW-MS-2792	PH2

WARNING: ALL HAVIS INC. PRODUCTS ARE DESIGNED WITH SAFETY OF USE AND INSTALLATION IN MIND. HOWEVER, IT IS THE SOLE RESPONSIBILITY OF THE OWNER/OPERATOR OF A VEHICLE USING HAVIS INC. MOUNTING AND DOCKING EQUIPMENT, TO INSURE THAT THE EQUIPMENT IS INSTALLED SO THAT IT WILL NOT INTERFERE WITH VEHICLE OPERATION, INTERFERE WITH SAFETY DEVICES, OBSTRUCT VIEW OF DRIVING CONDITIONS, OR IN ANY WAY DEGRADE OCCUPANT SAFETY. IMPROPER INSTALLATION CAN CAUSE SERIOUS INJURY IN THE EVENT OF AN ACCIDENT. INSTALLATION SHOULD ONLY BE PERFORMED BY QUALIFIED PROFESSIONALS. COMPUTERS AND MOTION DEVICES MUST BE MOVED TO AND STOWED/SECURED IN THEIR SAFE DRIVING POSITIONS BEFORE OPERATING VEHICLE.

DRAWING NO.
DS-DA-111_INST

PRODUCT DESCRIPTION
**RETRO-FIT KIT, DS-DELL-410
SERIES**

1-800-524-9900
WWW.HAVIS.COM

WEIGHT: (LBS)
0.12
REV. DATE
06-10-21