

INSTALLATION INSTRUCTIONS MH-3002, PKG-MH-3002

Universal Barcode scanner mount

TOOLS REQUIRED:

7/16" wrench

Phillips screwdriver

Standard socket set

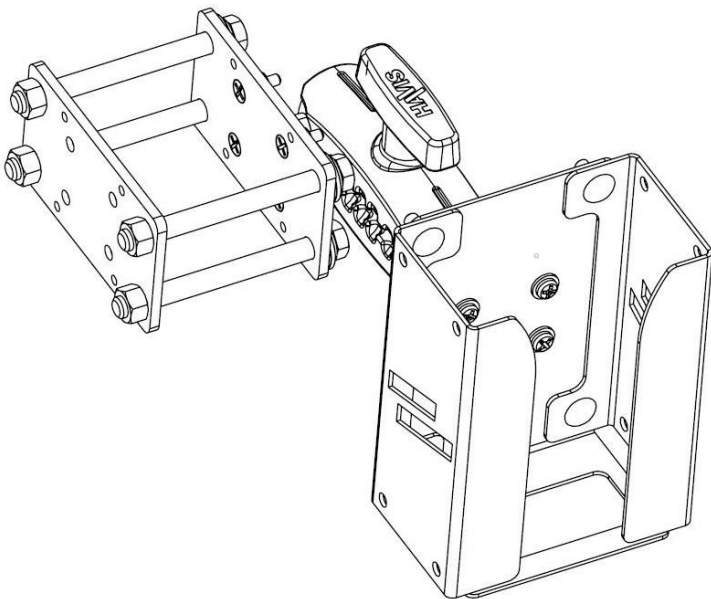
MH-3002 - HARDWARE

<u>QTY</u>	<u>DESCRIPTION</u>	<u>PART#</u>
8	1/4" serrated nut	GSM30170
4	1/4" x 2.5" Carriage bolt	GSM32005
4	1/4" x 4" Carriage bolt	GSM32023
4	1/4" x 1/2" Carriage bolt	GSM32040

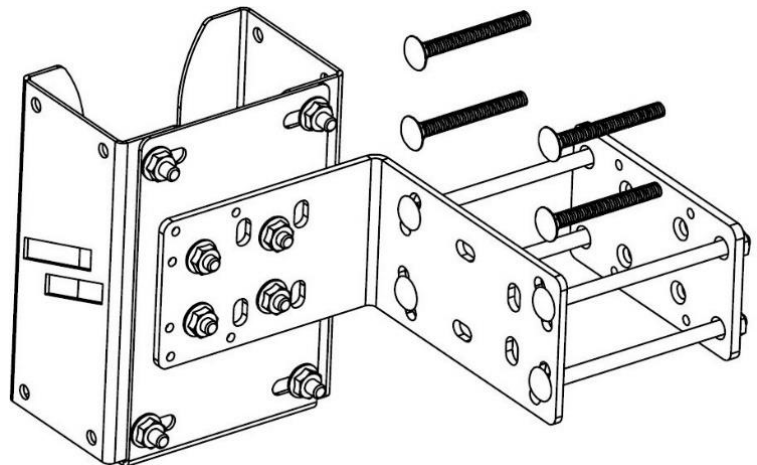
PKG-MH-3002 - HARDWARE

<u>QTY</u>	<u>DESCRIPTION</u>	<u>PART#</u>
4	3/8" Hex nut	GSM30008
4	3/8" Flat washer	GSM31010
4	3/8" Lock washer	GSM31028
4	3/8" x 4" Bolt	GSM33037

PKG-MH-3002



MH-3002

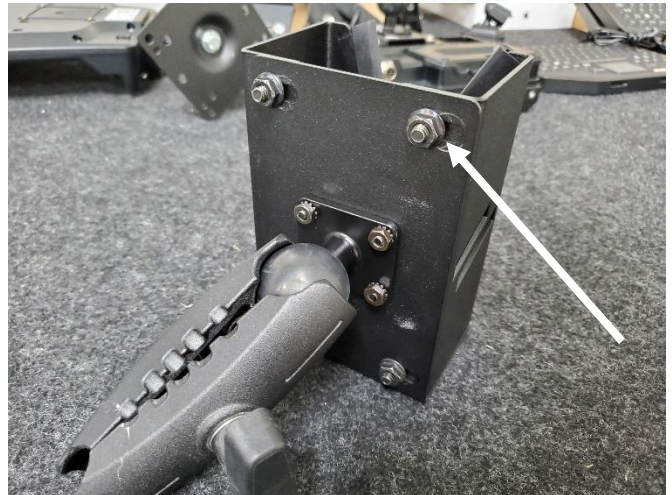


Always!

- Read all instructions before installing any Havis, Inc. products.
- **Check for obstructions (Wires, brake lines, fuel tank, etc.) before drilling any holes!**
 - Use hardware provided with install kit



Determine orientation of mount on forklift and attach rear "L" bracket accordingly using (4) 1/4" x 1/2" carriage bolts and serrated nuts.



Determine width of scanner and adjust cradle by loosening serrated nuts at corners of mount.



Clamp cradle to forklift with backing plate and supplied bolts and nuts.



Excess bolt threads can be removed if desired by using a cut off wheel.



Determine the best location for ease of use and tighten handle.



Installation is now complete.