

Install Instructions PT-A-301

Trim Kit and Vehicle Specific Details for Chevy Express, Ford Econoline and Nissan NV vans

One (1), Two (2) or Three (3) compartment Prisoner Transport Insert Models
PT-C01-XXX-X, PT-C02-XXX-X, PT-F01-XXX-X, PT-F02-XXX-X, PT-N01-XXX-X

Refer to

PT-1-INST, PT-2-INST or PT-3-INST

General Prisoner Transport Insert Installation Instructions for main insert basic assembly details

All optional equipment kits include instructions

Read all instructions before starting insert installation.

TOOLS REQUIRED:

Socket Set

Phillips Screwdriver

Drill and Drill bits

HARDWARE

<u>QTY</u>	<u>DESCRIPTION</u>	<u>PART #</u>	<u>USED FOR:</u>
12	#10 x 1" Phillips pan head sheet metal screw	GSM33183	Sill trim to floor
1	Rear sill plate (Diamond plate)	KKM0404-001	



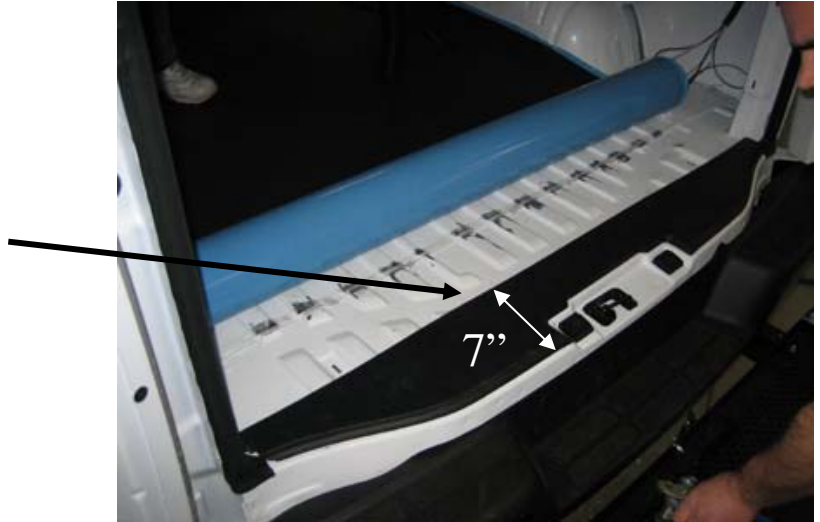
ALWAYS!

- Read all instructions before installing any Havis, Inc products.
 - Use hardware provided with install kit
- Check and double check under floor before drilling mount holes

All Prisoner Transport insert installations start with positioning from the rear of the vehicle. Use the measurements provided in this instruction to determine the position of the rear bulkhead in your specific vehicle and refer to the “General Prisoner Transport Insert Installation Instructions” for the basic main insert assembly.

2007 and Newer Chevrolet G-Series Van Rear OEM Trim modifications

The rear plastic floor trim on **Chevy vans** must be cut straight across as shown in photo. Measure seven inches (7”) from rear center of trim and cut straight line full width. (Jig saw works well for cutting plastic trim)



After plastic trim is cut and back in its original location, you must measure approximately 7” inches forward on both sides from newly cut trim to place the Prisoner Transport rear bulkhead. This is the starting position so parts fit into the correct locations.

Notes:

1/2" plywood to be installed from rear plastic trim to front bulkhead.

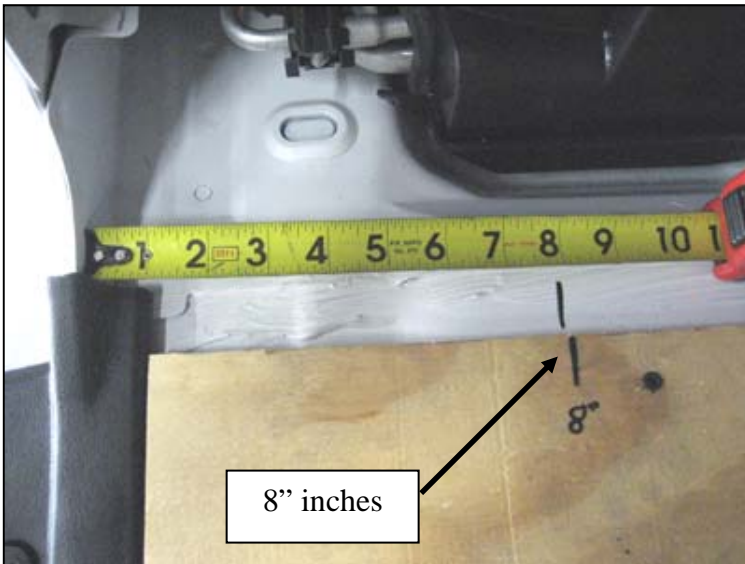
With OEM rear AC/Heat,
The insert will be slightly shifted to passenger side.



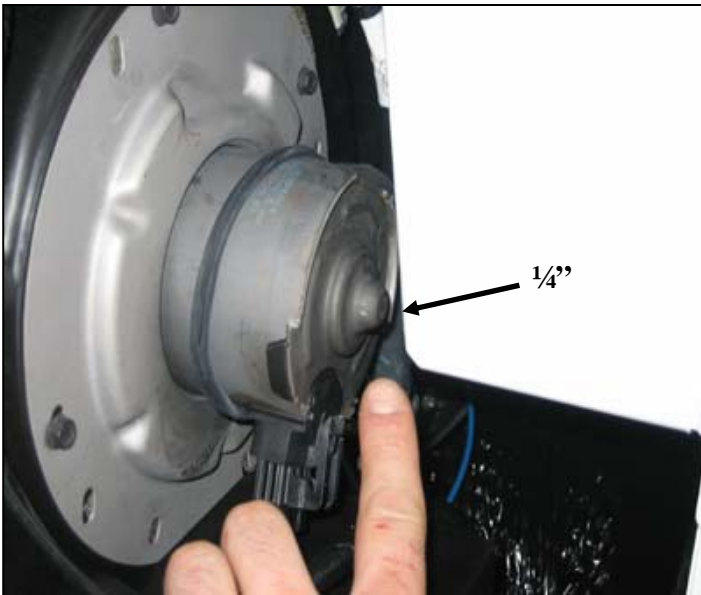
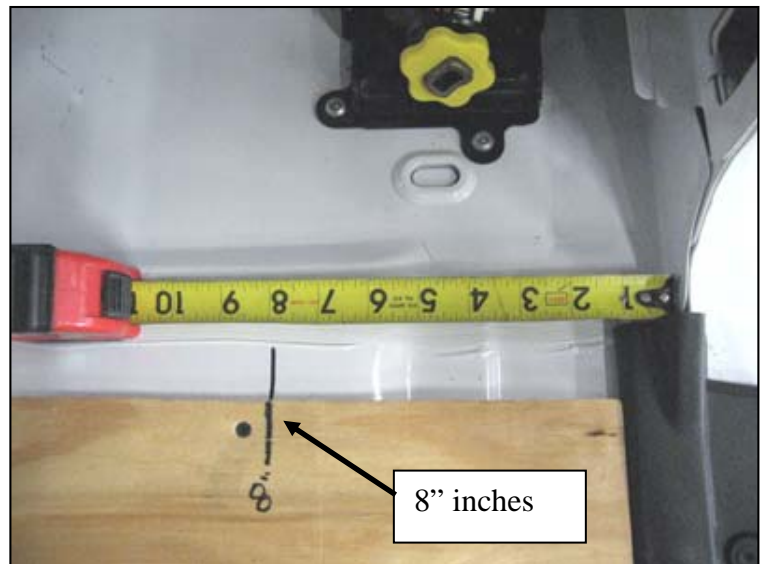
2007 -2014 Ford Econoline Van

*** Ford Van does NOT require rear trim modification***

Ford Van Driver side rear

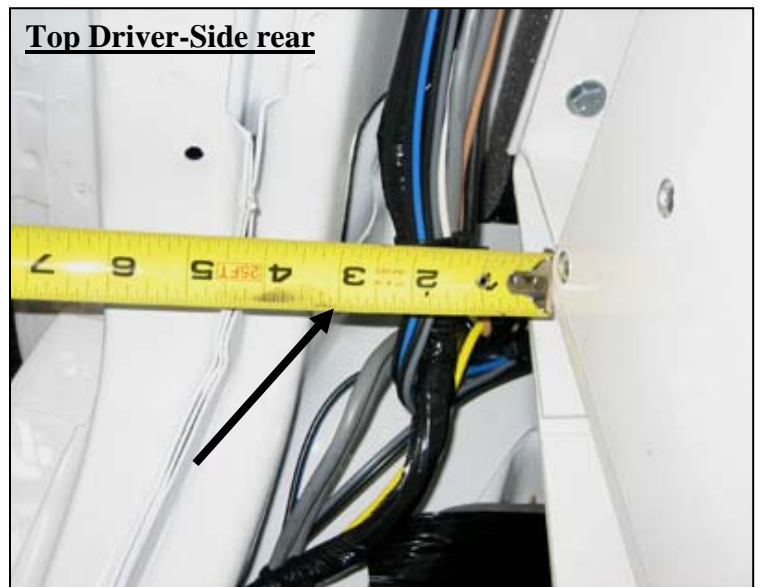


Ford Van Passenger side rear



When installing with factory rear air, the driver side of Rear Bulkhead should be at least 1/4" of space between the A/C blower motor and wing.

Top Driver-Side rear



Space at top between van interior and bulkhead should be approximately 3" inches

Nissan NV Cargo Van with Standard Low Roof

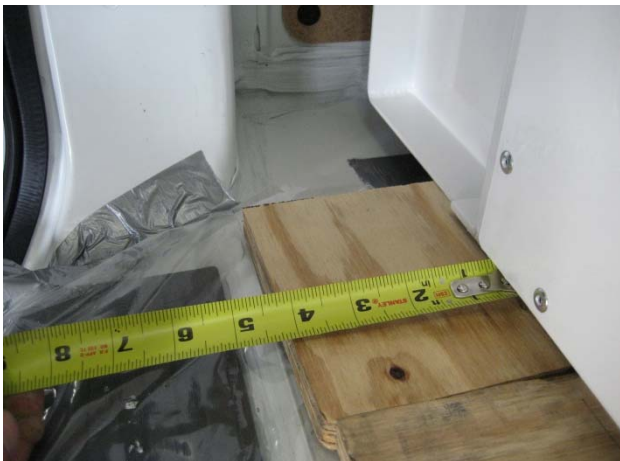
*** Nissan Van does NOT require rear trim modification***



Remove OEM cargo area rubber matting.
Install plywood on floor.
(3/8" or 1/2" plywood recommended)



Position insert and rear sill trim prior to bolting to floor.
Check under floor before drilling mount holes.



Rear bulkhead should be approximately 5" to 6" inches from rear door floor trim. Trim should overlap OEM trim.
Double check position of insert and door swing clearance prior to bolting to floor.



Approximate position of front bulkhead shown.
Check under floor before drilling mount holes.



View of NV van side compartment



View of NV van rear compartment