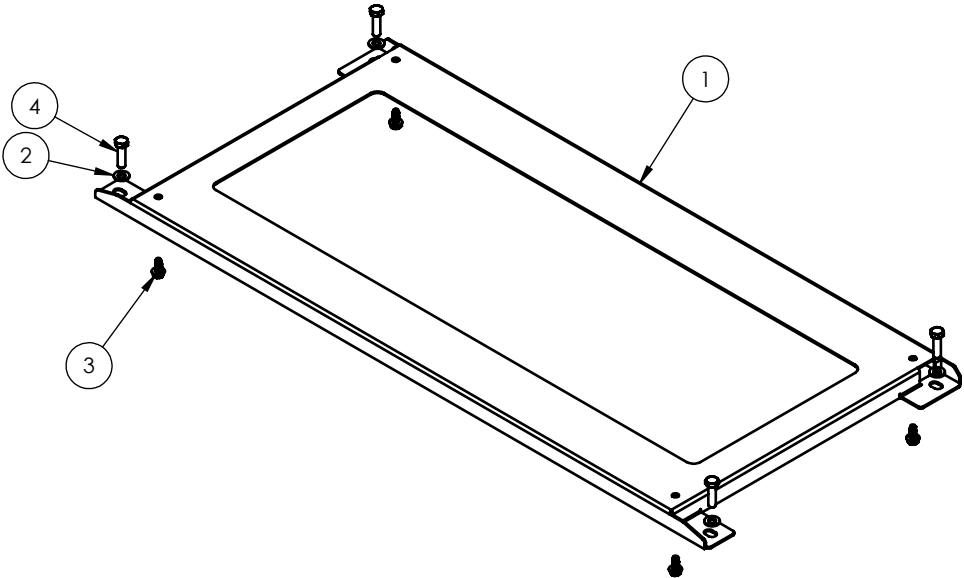
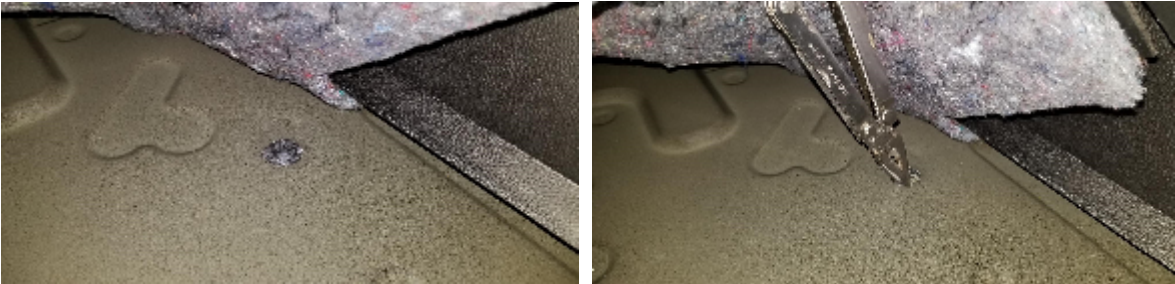


INSTALLATION INSTRUCTIONS

1. REMOVE THIRD ROW SEAT- IF VEHICLE IS NOT EQUIPPED WITH A THIRD ROW SEAT, UNCOVER THREADED HOLES IN FLOOR AS SHOWN.
2. INSTALL SBX-10XX (NOT SHOWN) ONTO MOUNTING BASE USING 4X GSM32038 THREAD FORMING SCREWS.
3. INSTALL MOUNTING BASE INTO VEHICLE USING 4X GSM33731 AND GSM31007 BOLTS AND WASHERS.
4. INSTALL ANY ADDITIONAL STORAGE BOXES AND ACCESORIES.



ITEM NO.	QTY.	PART NUMBER	DESCRIPTION
1	1	10-009933	STORAGE BOX MOUNT, TAHOE
2	4	GSM31007	WASHER 3/8 FLAT ZP
3	4	GSM32038	Hex Head Thread-Forming Screw 5/16"-18, 3/4" Long
4	4	GSM33731	HRDW,SCRW,10mm-1.50x35mm,HHCS, ZP, GRD 8

HAVIS HAVIS, INC.		75 JACKSONVILLE RD. WARMINSTER, PA. 18974 1-800-524-9900
TITLE: INSTALLATION INSTRUCTIONS, TAHOE SBX-10XX MOUNT		
DO NOT SCALE DRAWING		
SIZE A	DWG. NO. SBX-5002-INST	REV 9-19
WEIGHT (LB): 14.7199	SCALE: 1:10	SHEET 1 OF 1