

# K9-F27-XL INSTALLATION INSTRUCTIONS

## K9 Kit for the 2018-2023 Ford Expedition SSV

### TOOLS REQUIRED:

Phillips screwdriver  
Standard socket set

Trim panel removal tool  
Metric socket set

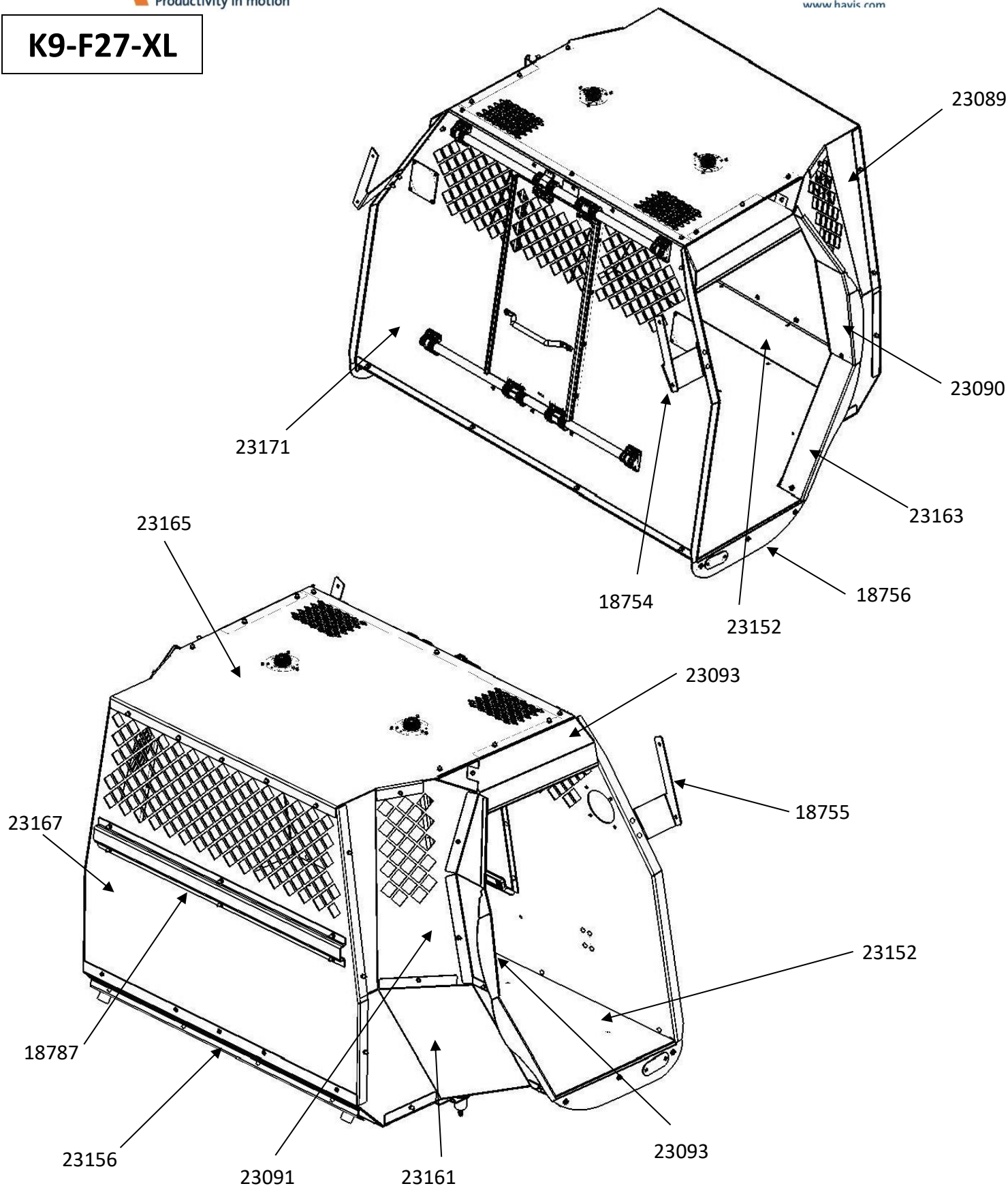
Caulk gun  
Wire crimpers/cutters

<u>QTY</u>	<u>DESCRIPTION</u>	<u>PART#</u>	
1	Front floor mounting bracket	18744	
1	Middle floor mounting bracket	23155	
1	Rear floor mounting bracket	23156	
1	Forward floor	23169 – White	23170 – Black
1	Rear floor section	23152 – White	23151 – Black
1	Rear bulkhead	23167 – White	23168 – Black
1	Ceiling	23165 – White	23166 – Black
1	Rear bulkhead support	18787	
1	Driver side lower filler	23163 – White	23164 – Black
1	Passenger side lower filler	23161 – White	23162 – Black
1	Driver side middle filler	23089 – White	23090 – Black
1	Passenger side middle filler	23091 – White	23148 – Black
1	Driver side upper middle filler	23090 – White	23149 – Black
1	Passenger side upper middle filler	23092 – White	23147 – Black
1	Driver side upper trim panel	23094 – White	23145 – Black
1	Passenger side upper trim panel	23093 – White	23146 – Black
1	Driver side upper mounting bracket	18754	
1	Passenger side upper mounting bracket	18755	
2	Side floor trim panel	18756 – White	
1	Rubber floor mat	23154	
2	Dome light kit	K9-A-106	
1	Front bulkhead assembly	23171 – White	23172 – Black
1	Driver side window guard	21246	
1	Passenger side window guard	21247	
1	Driver side door panel	14669 – White	14670 – Black
1	Passenger side door panel	14671 – White	14672 – Black

### 30-10927 Hardware kit

<u>QTY</u>	<u>DESCRIPTION</u>	<u>PART#</u>
4	.77" Front floor bracket spacer	11415
4	1.5" Middle floor bracket spacer	11561
2	1" Rear floor bracket spacer	11441
1	Head restraint label	12335
2	Gas shock cover plate	18758
16	1/4" Serrated nut	16086
4	7/16" Flat washer for rear floor bracket	16128
61	1/4" Flat washer	16154
20	3/4" x 3/4" Carriage bolt	16235
4	#10 x 1/2" Flat head screw	16413
4	M10 x 70mm bolt for rear floor bracket	16549
8	10-32 x 1/2" Machine screw	16584
8	10-32 Keps nuts	16067
56	1/4" x 3/4" Phillips head bolt	16618
5	1/4" x 1/2" Phillips head bolt	16617
1	Silicone caulk sealant (white)	20011

# K9-F27-XL



## Always!

- Read all instructions before installing any Havis, Inc. products.
- Check for obstructions (Wires, brake lines, fuel tank, etc.) before drilling any holes!
- Use hardware provided with install kit

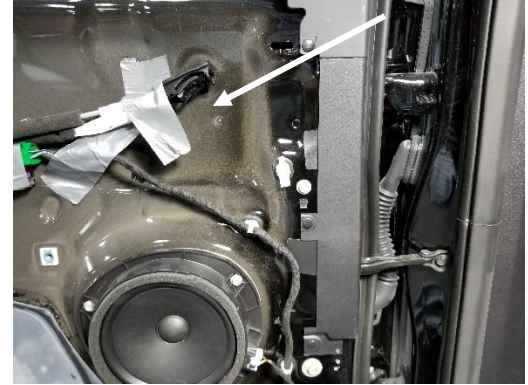




Remove rear passenger door panels first.



Remove two (2) bolts behind access cover in middle of door panel.  
(8mm socket)



Tape the lock rod and door handle release cables along the upper alcove of the door to keep them clear.

### ***Remove speakers***



Remove the window switch from the door and relocate the harness.  
The switch should be placed between the moisture barrier and K9 door panel.



Place K9 door panel onto the door. Be sure to route the wires for the optional K9-A-104 window fan at this time.



Attach the K9 door panel using the supplied #10 x 1/2" sheet metal screws.



Attach window screen to door panel using #10 x 1/2" screws.



Attach upper window bracket to door frame using #10 x 1/2" flat head screws.



Attach optional 10" fan and fan mount to window guard with 1/4" hardware and spacers as per the instructions provided in the optional **K9-A-104** kit.





Remove the rear seats from the vehicle.  
Set hardware aside for later use.



Place the larger 1.5" spacer over the (4) rear bolt holes corresponding to the rear floor mounting bracket.



Attach the middle floor, mounting bracket using supplied M10 x 70mm bolts and 7/16" flat washers.



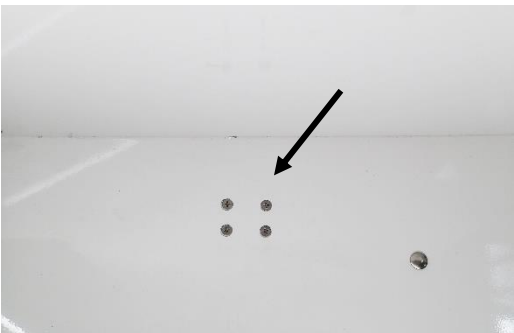
Remove rear covers and hardware from forward side, corners of cargo area storage pocket. Install 1" spacer, repeat for other side.



Install rear floor, mounting bracket using OEM hardware.



Place the .77" spacers at the front and attach front bracket using (4) previously removed OEM seat bolts.



Floor has holes on each side.  
Use 10-32 x 1/2" flat head machine screws and nuts for plugging holes.  
Note: These holes are no longer recommended for optional gas spring mounting.



Place floor in vehicle and loosely attach using 1/4" x 3/4" carriage bolts and serrated nuts on the front bracket, 1/4" x 3/4" Phillips bolts, and washers on the back bracket.

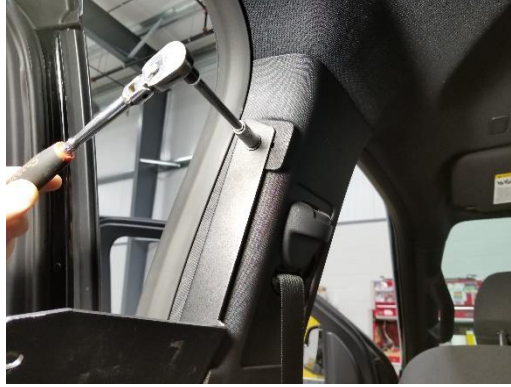


Attach rear floor section to forward floor section and rear floor, mounting bracket using 1/4" x 3/4" Phillips bolts, and washers.





Remove cover from "B" pillar grab handle to expose (2) 10mm head bolts. Remove bolts and set aside.



Attach upper mounting brackets using previously removed OEM hardware.  
Do the same for both sides.



Place front bulkhead floor into vehicle and attach using 1/4" x 3/4" carriage bolts and serrated nuts.  
(Bolt heads on K9 side)



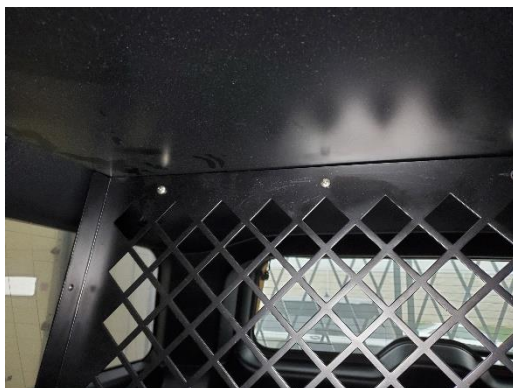
Attach to upper mounting brackets 1/4" x 3/4" carriage bolts and serrated nuts.  
Optional K9-A-102 fan can also be mounted at this time.



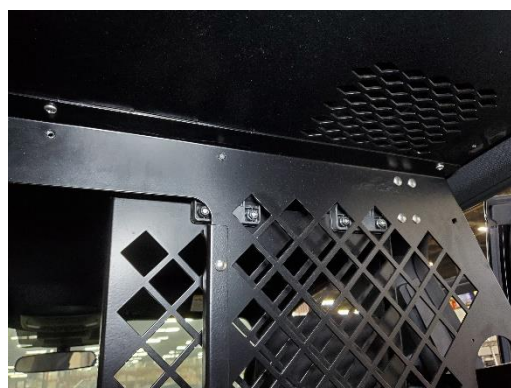
Place rear bulkhead in vehicle.



Attach rear bulkhead to floor using 1/4" x 1/2" Phillips head bolts and washers.



Place ceiling in kit with the lip hanging over the rear bulkhead. Attach using 1/4" x 3/4" Phillips head bolts and washers.



Attach front using 1/4" x 3/4" Phillips head bolts and washers.



Place lower corner trim panel in and attach using 1/4" x 3/4" Phillips head bolts and washers.



Attach upper, forward side trim panel to lower corner trim panel using 1/4" x 3/4" Phillips bolt and washer.



Attach upper side trim panel to rear wall lower corner trim panel and upper forward side trim panel using 1/4" x 3/4" Phillips bolts and washers.



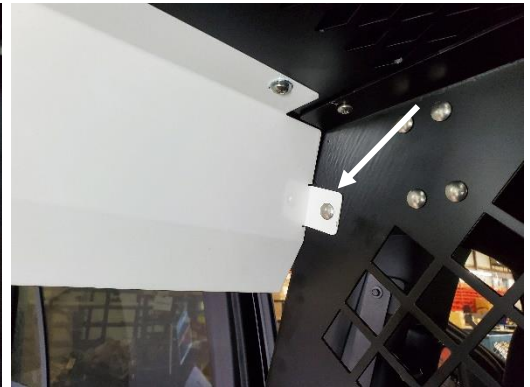
Attach upper ceiling trim panel to upper side trim panel using 1/4" x 3/4" Phillips bolt and washer.



Attach upper ceiling trim panel to upper side trim panel using 1/4" x 3/4" Phillips bolt and washer.



Attach upper ceiling trim panel to ceiling using (2) 1/4" x 3/4" Phillips bolts and washers.



Attach upper ceiling trim panel to front bulkhead using carriage bolt and serrated nut.

***Repeat process for other side***

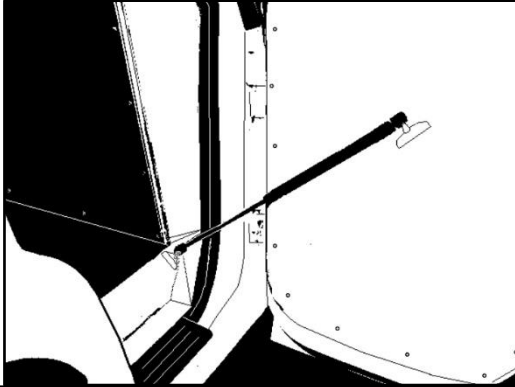


Attach lower side filler trim panels using 1/4" x 3/4" Phillips head bolts and washers.



Attach 23177 cover over pass through hole in side filler panel with #10 x 1/2" flat head sheet metals screws.





If installing gas spring (shock) for Hot-N-Pop system, install at angle as per AceK9 instructions supplied with Hot-N-Pop. Image above is an example only. Depending on application, the installer must determine a safe and effective mount location. When attaching bracket to door, make sure that screws go into door panel and OEM sheet metal for maximum strength.



Install dome light in ceiling with #10 x 3/4" flat head sheet metals screws included with dome light kit.



Silicone caulk all lower seams to ensure a watertight seal. Once caulk has dried. Place the rubber mat in kit.



If using optional K9-A-112 divider, place in kit at this time. Attach to rear wall using (2) 1/4" x 3/4" Phillips head bolts and washers.



Attach to lower front bulkhead using 1/4" x 3/4" Phillips head bolt and washer.



Attach to upper front bulkhead using 1/4" x 3/4" Phillips head bolt and washer.



Installation is now complete

