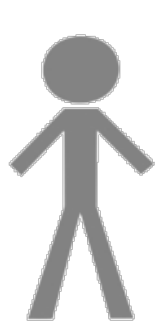
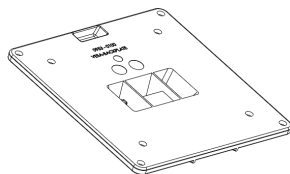


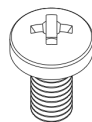
#### TOOLS



#### PARTS

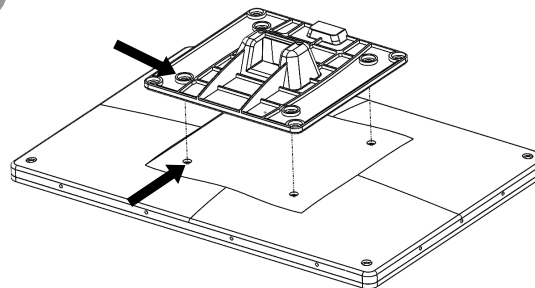


1 x VESA  
Backplate



4 x M4x8mm  
screws

1



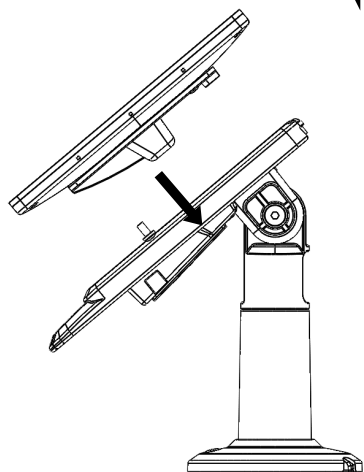
Step 1

Align holes of VESA  
backplate with  
corresponding mounting  
holes of display

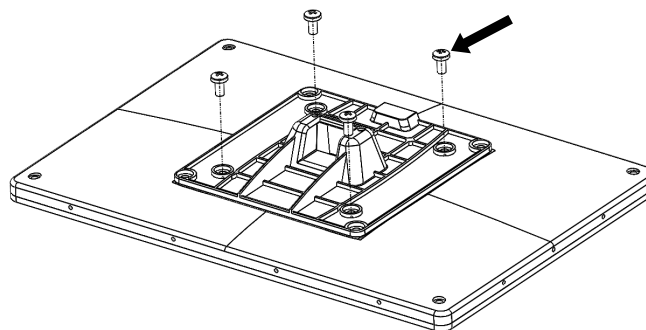
3

Step 3

Fit terminal onto stand.  
Press firmly until click.



2



Step 2

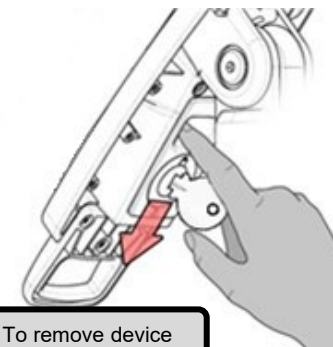
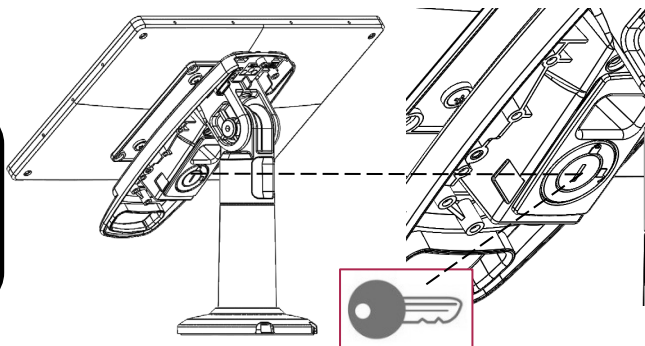
Fit screws using Screwdriver to hand tighten.  
(M4 screws supplied. For other sizes refer to  
display manufacturer handbook)

#### OPTIONAL

##### SAFEBASE OPTION

To lock device, turn key  
clockwise then remove key.

To unlock, turn counter-  
clockwise.



To remove device