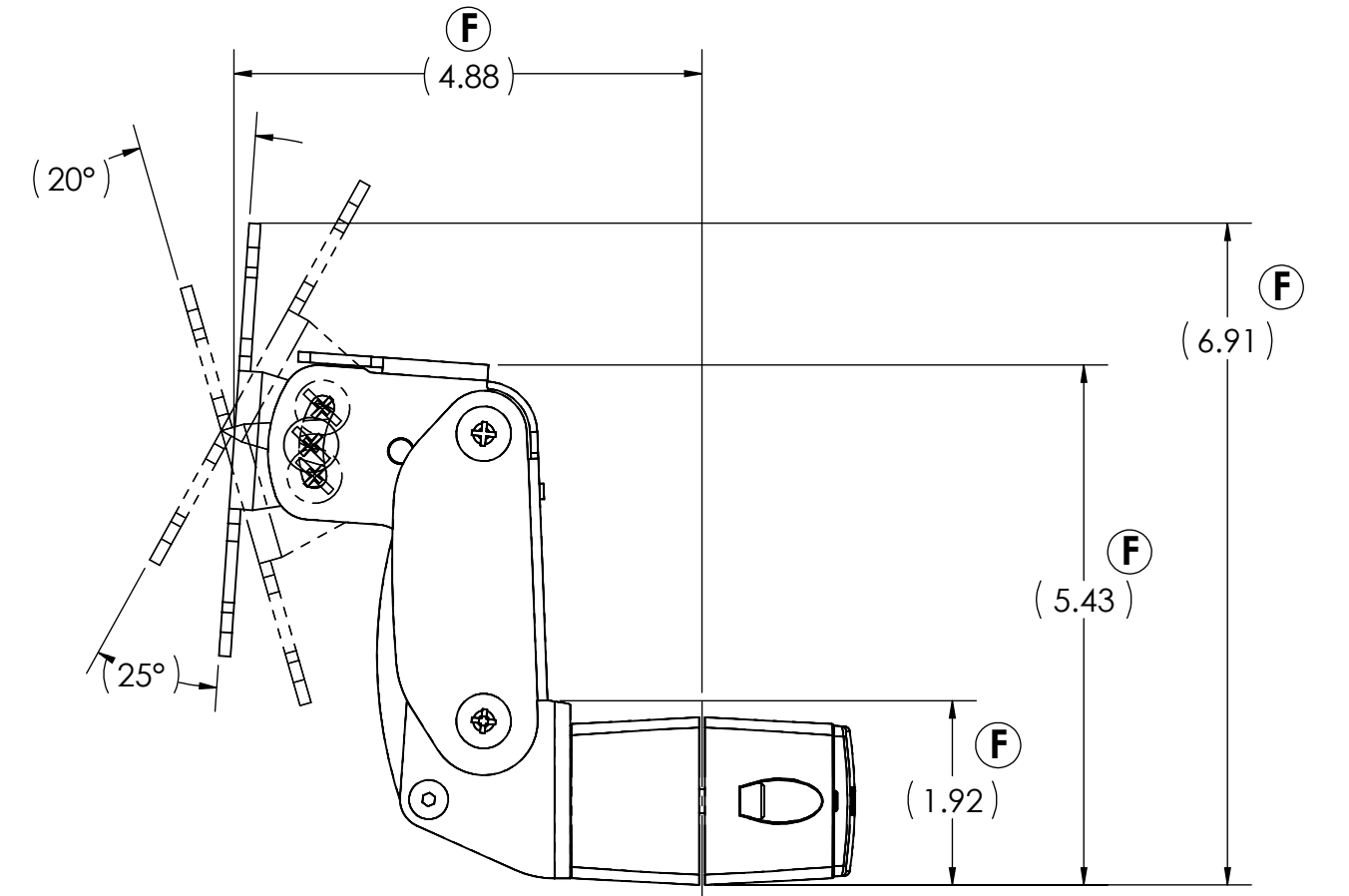
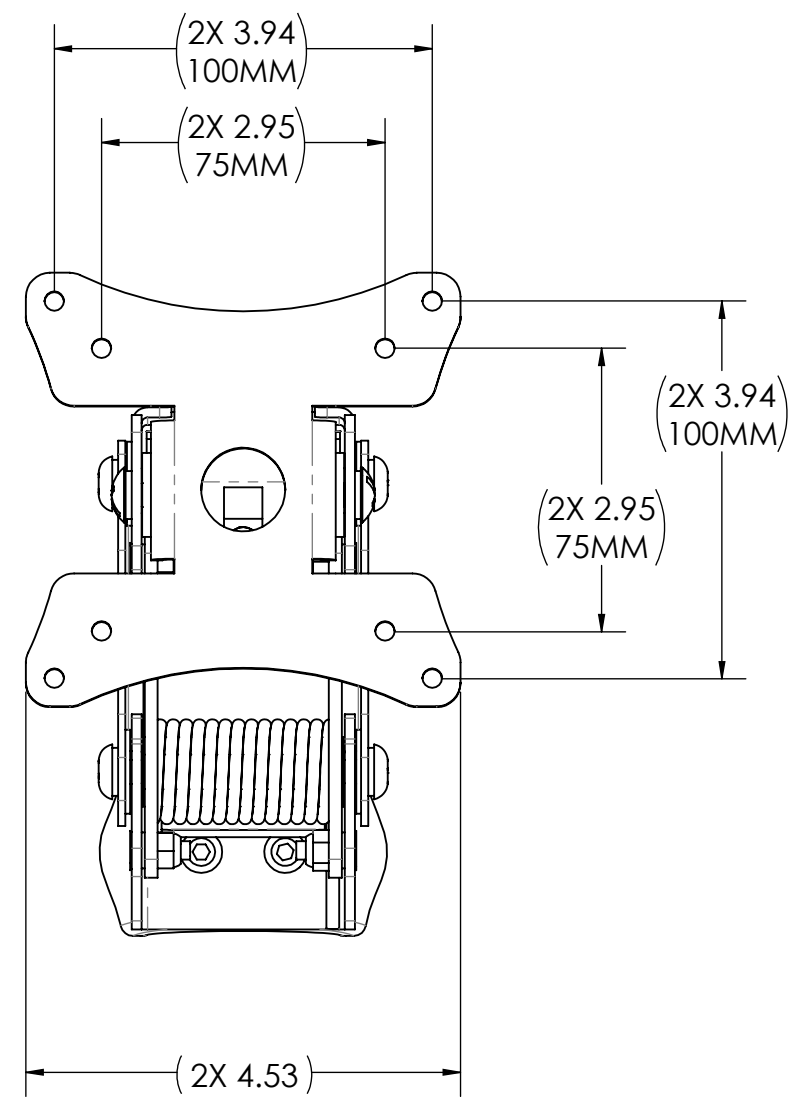
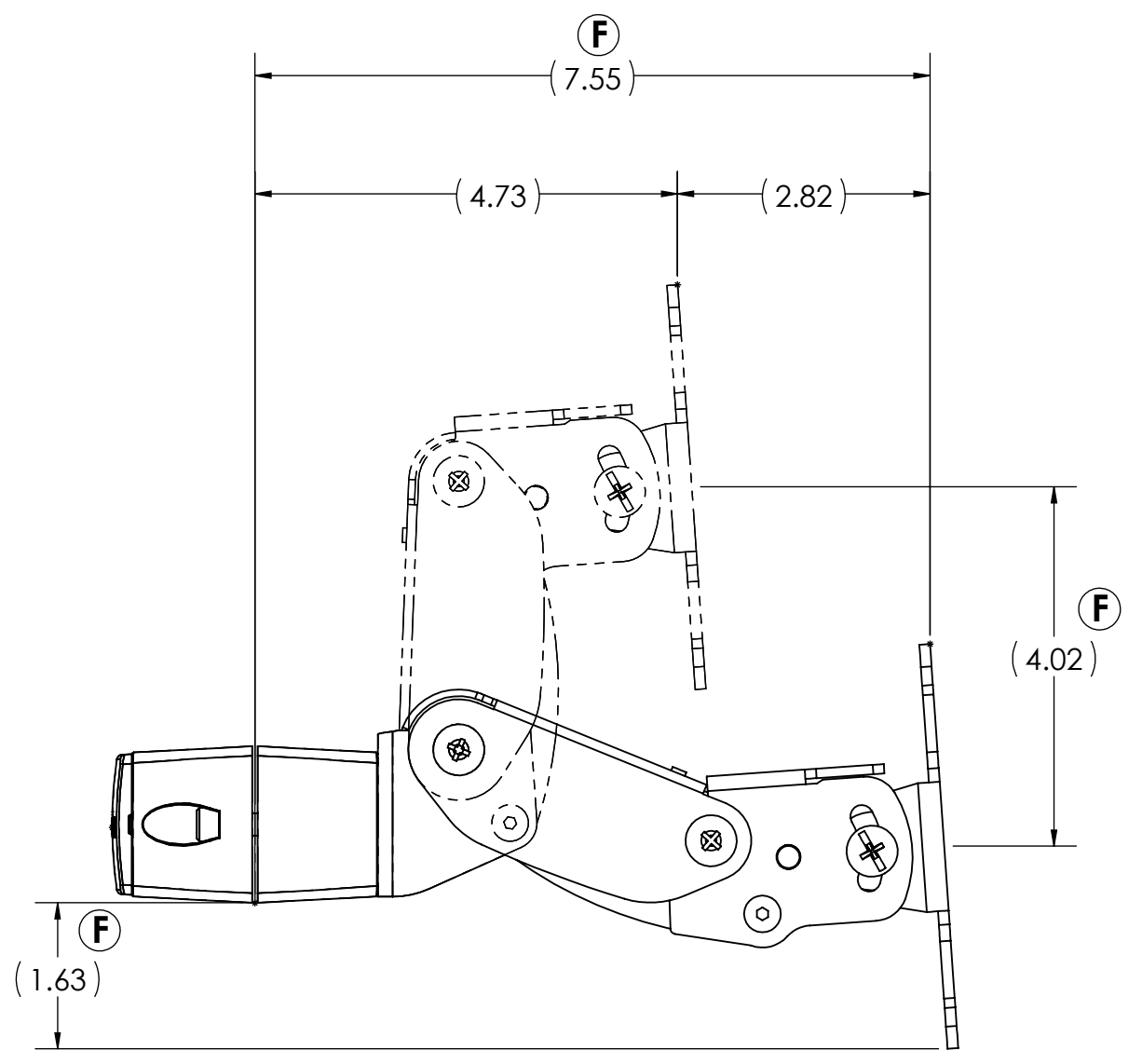
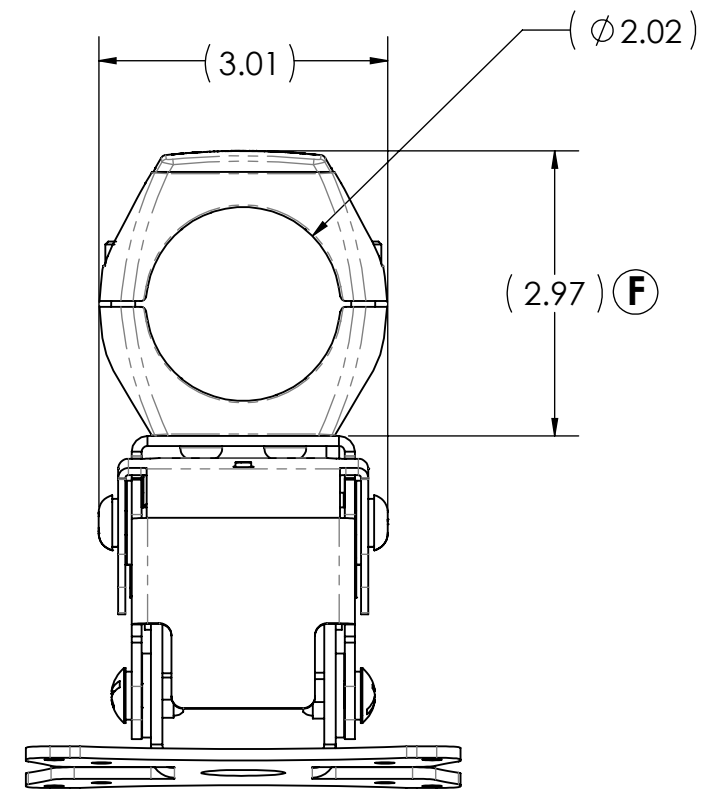
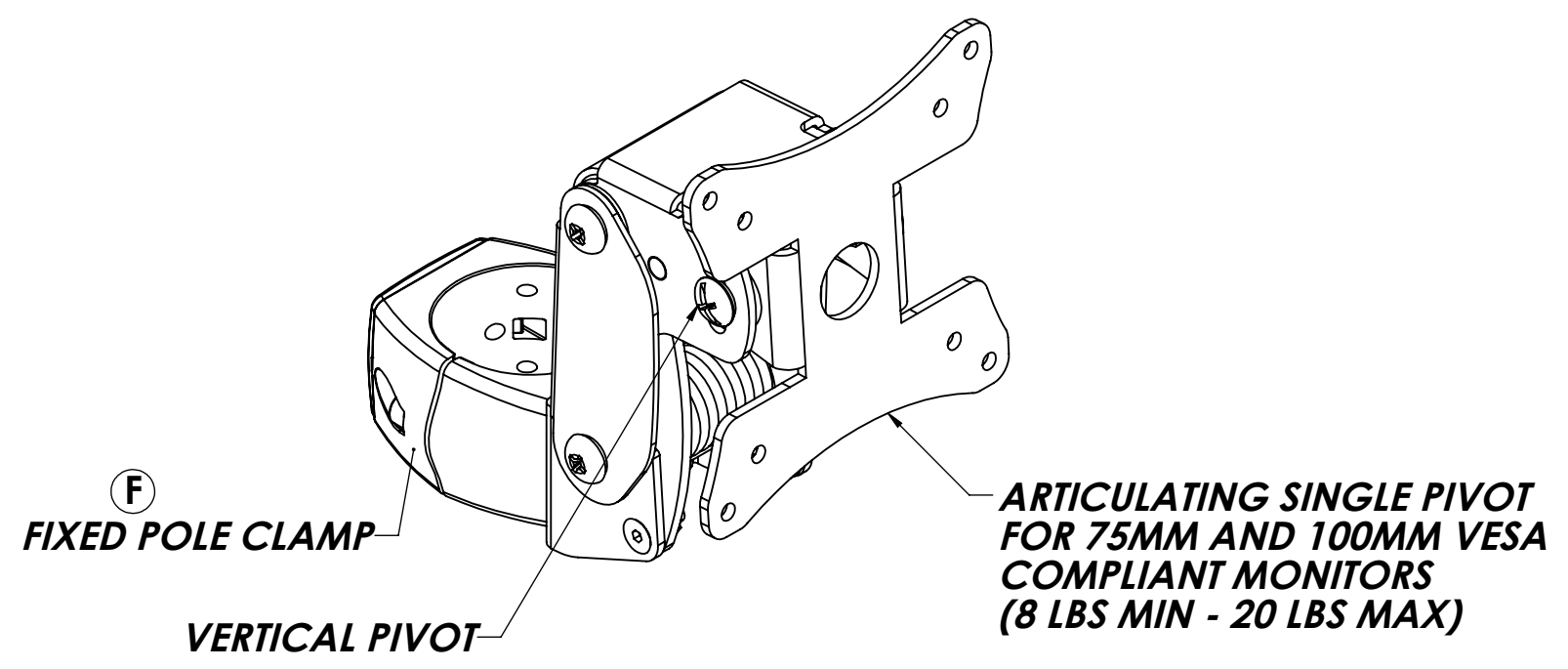


REVISION F CHANGES = **F** (9 CHANGES NOTED ON DRAWING)




REV.	DESCRIPTION	DATE	BY	CHK'D
F	REVISED FIXED POLE CLAMP TO NEW DESIGN, REVISED ARTICULATING SINGLE PIVOT TO MOUNT FIXED POLE CLAMP, DIM 2.97 WAS 2.75, 6.91 WAS 7.07, 5.43 WAS 5.59, 1.92 WAS 2.09, 1.63 WAS 1.47, ADDED DIMS 4.02, 4.88	01/31/14	JEB	SY
E	REVISED ENS1936D AND ENS1936J, 2X 1/4-20 X .625 PTHMS SHOULDER WAS 2X 1/4-20 X .75 PTHMS SHOULDER GRADE 5, 4X 16FW250062B WAS 16FW250062	08/17/12	JVT	
D	REVISED ENS1936A AND ENS1936D, ADDED 2X 1/4-20 X .75 PTHMS SHOULDER GRADE 5, 2X 1/4-20 NYLOCK NUTS WERE 2X 1/4-20 NYLOCK JAM NUTS	01/20/12	JVT	
C	ADDED 4X NYLON WASHERS, 4X 1/4-20 X .75 PTHMA SHOULDER WAS 4X 1/4-20 X .625 PTHMA SHOULDER, ADDED 2X 1/4-20 X .75 PTHMS SHOULDER	08/03/11	MKW	
B	REVISED ENS1936A, ENS1936B, ENS1936D, ENS1936J, 1.6" WAS 2.5"	03/14/11	JAS	
A-MOD	ADDED SPRING WASHERS	03/11/11	JAS	
A	RELEASED FOR PROTOTYPE	02/02/11	JAS	

THE INFORMATION CONTAINED IN THIS DRAWING IS THE SOLE PROPERTY OF HAVIS AND REPRODUCTION IN PART OR IN WHOLE WITHOUT THE WRITTEN PERMISSION OF HAVIS IS PROHIBITED.



CUSTOMER VERIFICATION AND AUTHORIZATION

DRAWN J. SORENSON			
DATE 02/02/2011			
CUSTOMER APPROVAL (SIGNATURE REQUIRED):		TITLE MONITOR ARM, ARTICULATING HEIGHT, NON ROTATING, FIXED POLE CLAMP INCLUDED	
DATE	SIZE C	DWG. NO. 367-2008-40	REV. F SHEET 1 OF 1