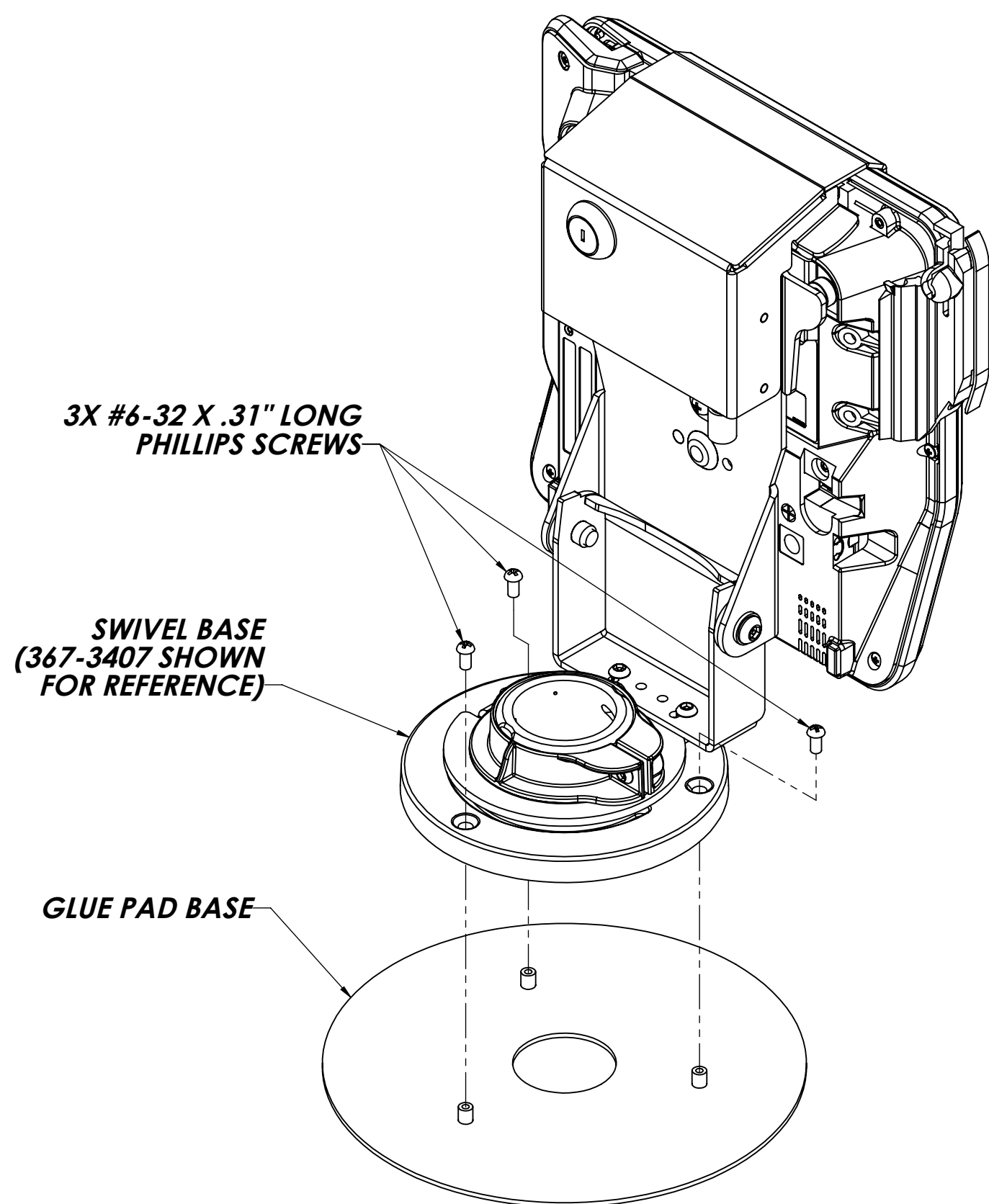


INSTALLATION INSTRUCTIONS



3X #6-32 X .31" LONG PHILLIPS SCREWS

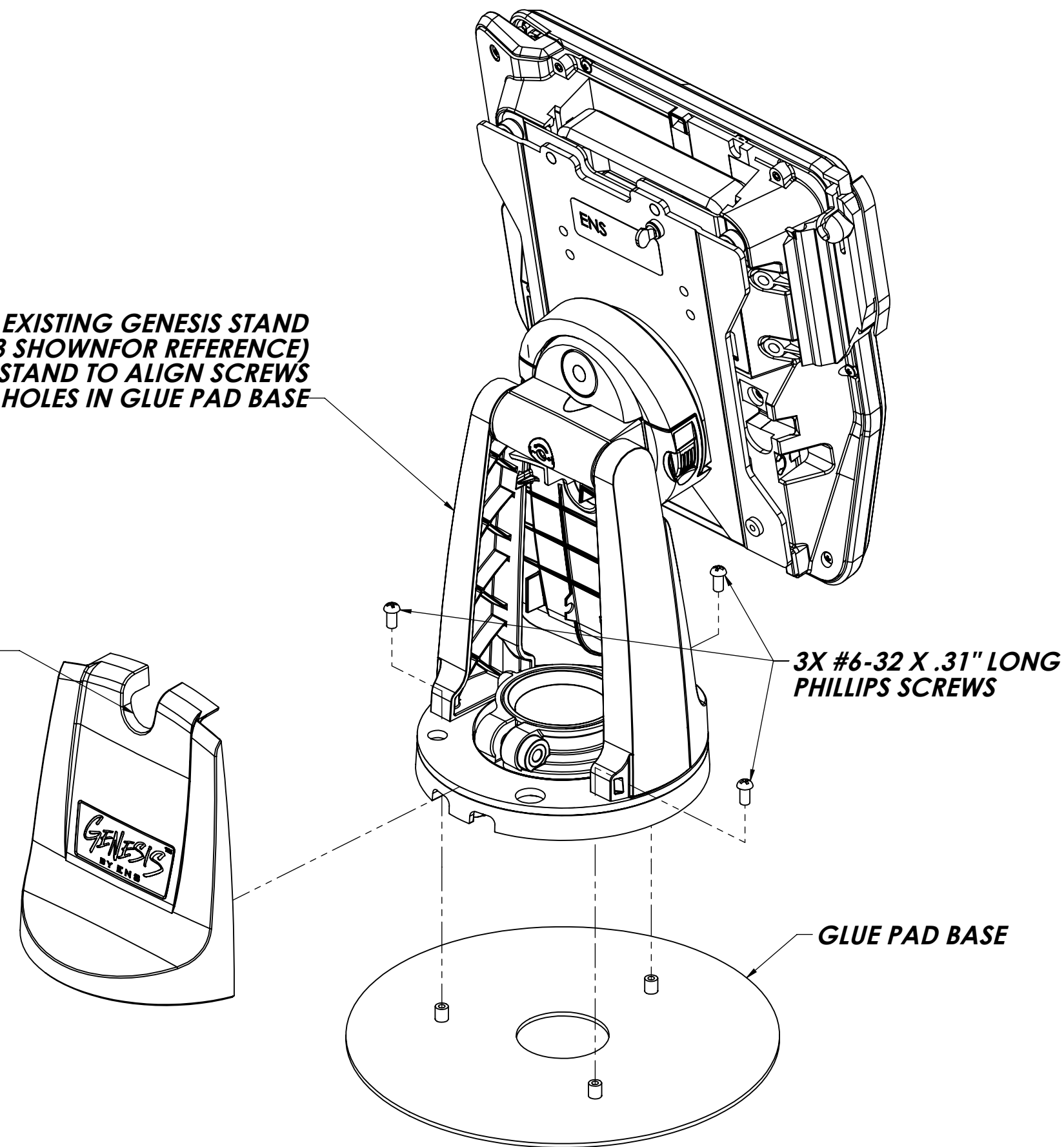
SWIVEL BASE (367-3407 SHOWN FOR REFERENCE)

GLUE PAD BASE

ENS SWIVEL STAND ASSEMBLY

CUSTOMER'S EXISTING GENESIS STAND (367-3433 SHOWN FOR REFERENCE) SWIVEL STAND TO ALIGN SCREWS TO MOUNTING HOLES IN GLUE PAD BASE

TO REMOVE COVER, PULL FROM THIS GROOVE



3X #6-32 X .31" LONG PHILLIPS SCREWS

GLUE PAD BASE

ENS GENESIS STAND ASSEMBLY

TOOLS LIST:

1. #2 PHILLIPS SCREW DRIVER

ASSEMBLY STEPS:

1. ASSEMBLE **GLUE PAD BASE** TO **CUSTOMER'S ENS SWIVEL OR GENESIS STAND** USING **3X #6-32 X .31" LONG PHILLIPS SCREWS** AS SHOWN.
2. ROTATE THE **STAND** LEFT OR RIGHT TO THE STOP POINT TO DETERMINE WHICH WAY YOU WANT IT TO ROTATE.
3. REMOVE THE PAPER BACKING ON THE ADHESIVE GLUE PAD ON THE BOTTOM OF THE **GLUE PAD BASE** AND THEN APPLY THE STAND TO THE COUNTER. CLEAN MOUNTING SURFACE WITH ISOPROPYL ALCOHOL WIPE AND ALLOW TO DRY BEFORE ATTACHING. **MAKE SURE STAND IS IN THE CORRECT ORIENTATION BEFORE APPLYING IT TO THE COUNTER.**
4. REFER TO INSTRUCTIONS INCLUDED WITH **SWIVEL OR GENESIS STAND** TO FINISH CREDIT CARD MACHINE / TABLET INSTALLATION.

REV.	DESCRIPTION	DATE	BY	CHK'D
B		9/22/05	JGC	
7/19/2005				
HAVIS				
TITLE CUSTOMER INSTRUCTIONS, 7.00" DIAMETER METAL BASE, WITH GLUE PAD				
SIZE C		DWG. NO. 367-0731-G		REV. B SHEET 1 OF 1

THE INFORMATION CONTAINED IN THIS DRAWING IS THE SOLE PROPERTY OF HAVIS AND REPRODUCTION IN PART OR IN WHOLE WITHOUT THE WRITTEN PERMISSION OF HAVIS IS PROHIBITED.