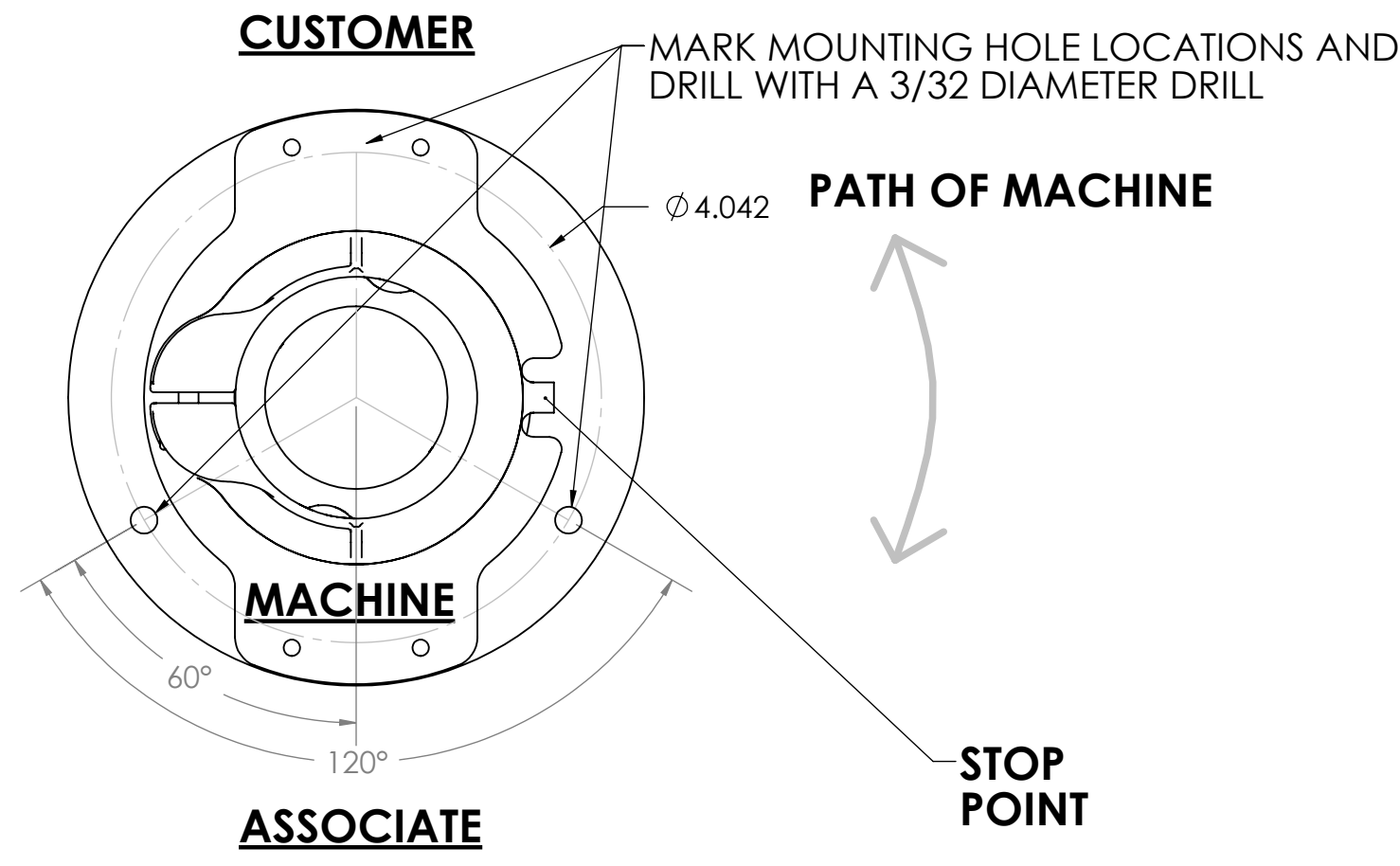
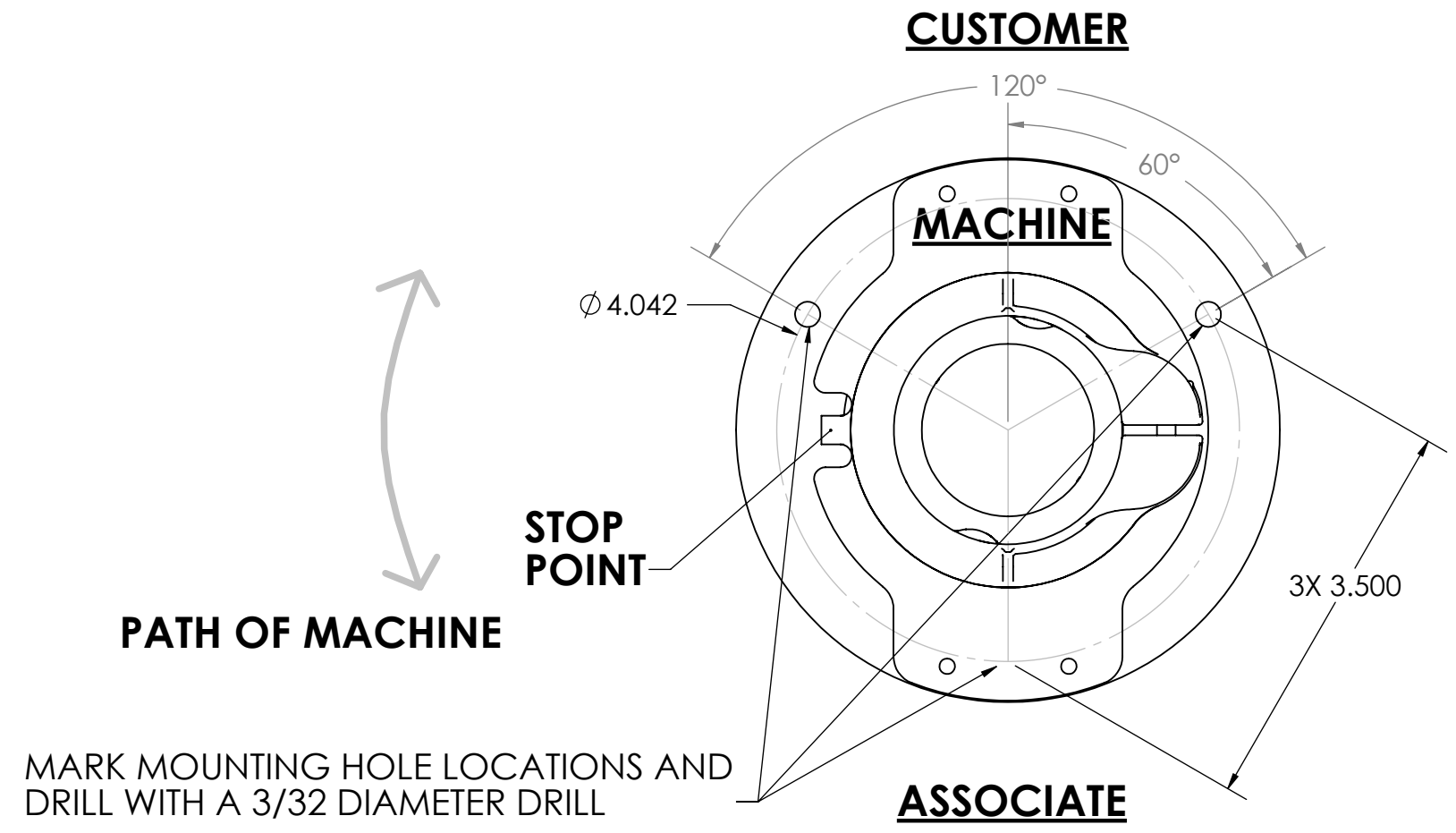


MOUNTING OPTION #1



MOUNTING OPTION #2



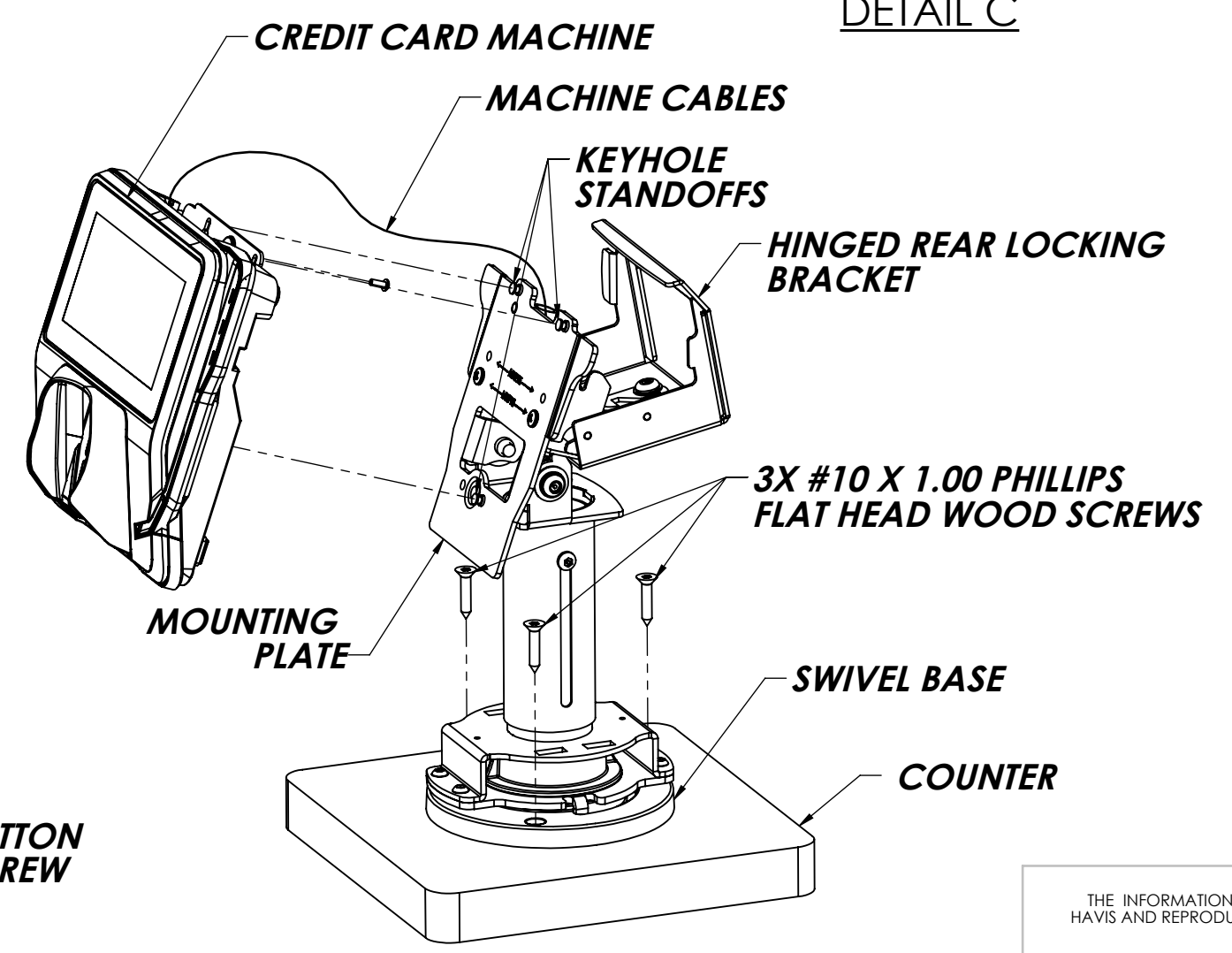
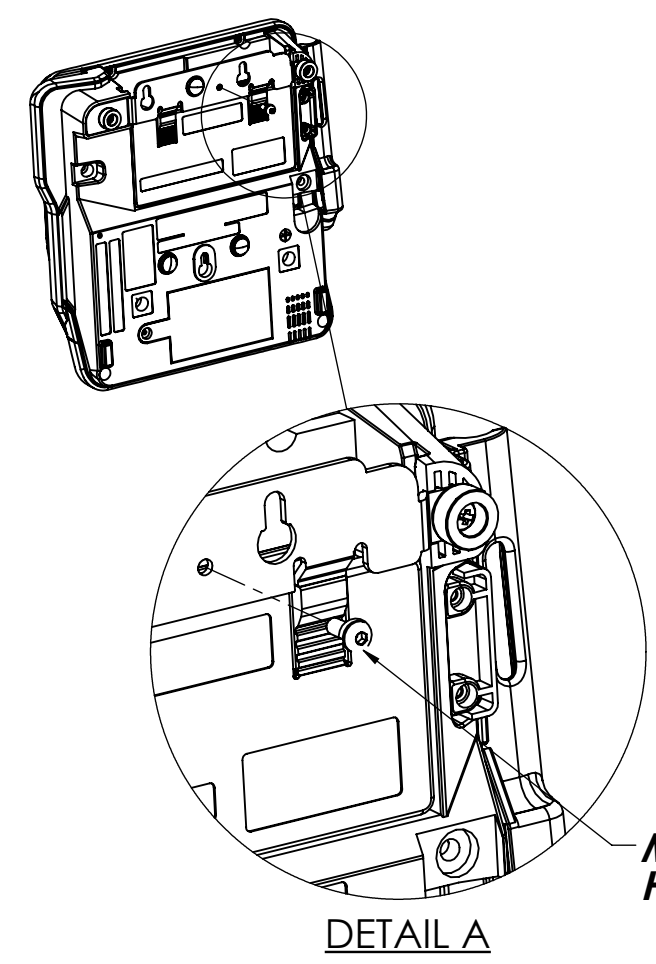
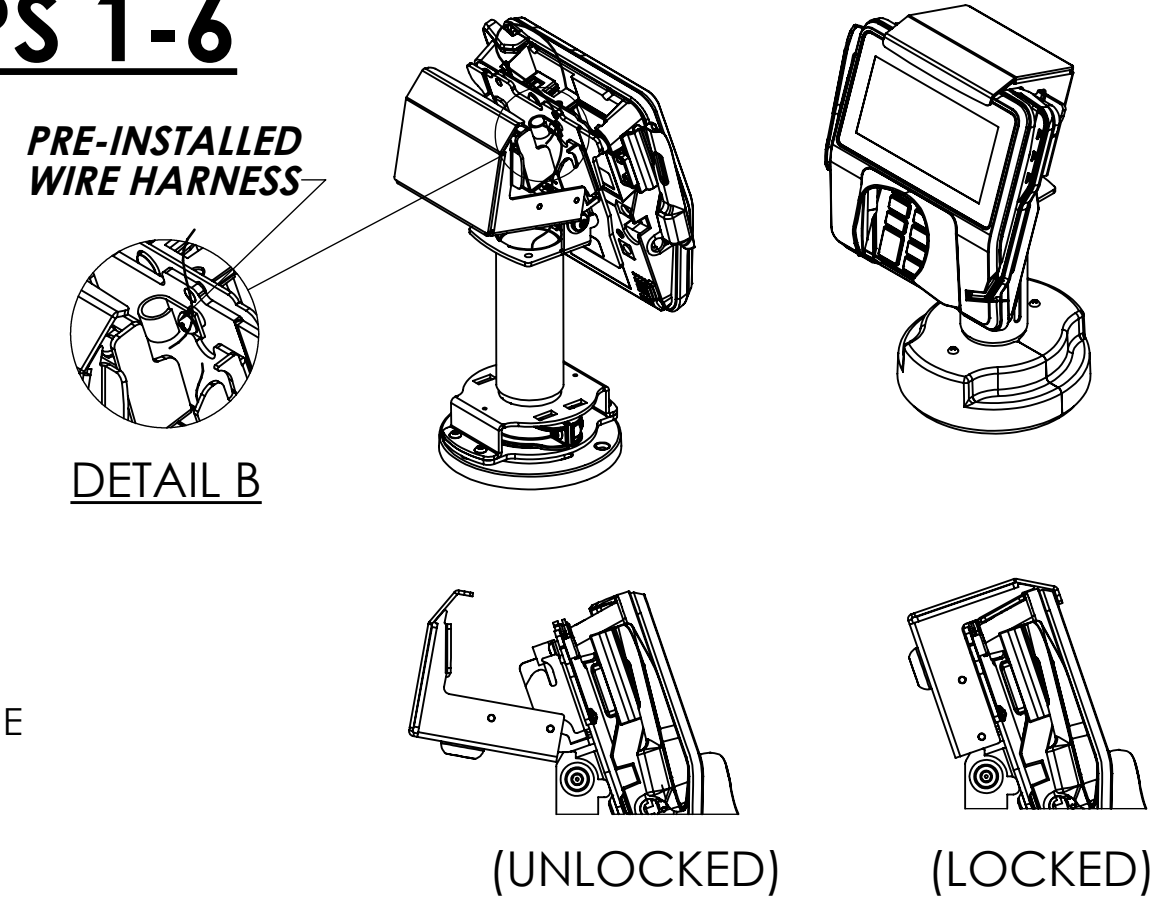
TOOL LIST:

- #2 PHILLIPS SCREW OR DRILL DRIVER
- 2MM ALLEN WRENCH (PROVIDED)

STEPS 1-6

ASSEMBLY STEPS:

- ROTATE THE **SWIVEL BASE** LEFT OR RIGHT TO THE STOP POINT AND THEN COMPARE IT TO THE ILLUSTRATIONS ABOVE TO DETERMINE WHICH WAY YOU WANT IT TO ROTATE.
- ASSEMBLE THE **SWIVEL BASE** TO THE **COUNTER** BY USING **3X #10 X 1.00 PHILLIPS FLAT HEAD WOOD SCREWS** AS SHOWN **MAKING SURE IT IS IN THE CORRECT ORIENTATION BEFORE YOU SCREW IT TO THE COUNTER.**
- INSTALL THE **M3 X 8MM BUTTON HEAD CAP SCREW** TO THE UNDERSIDE OF THE **CREDIT CARD MACHINE**, AS SHOWN IN **DETAIL A.**
- ROUTE THE **MACHINE CABLES** THROUGH THE **PRE-INSTALLED WIRE HARNESS** AS SHOWN IN **DETAIL B.**
- ATTACH THE **CREDIT CARD MACHINE** BY SLIDING IT ONTO THE **KEYHOLE STANDOFFS** AS SHOWN.
- MOVE **HINGED REAR LOCKING BRACKET** INTO PLACE AND LOCK AS SHOWN IN **DETAIL C.**



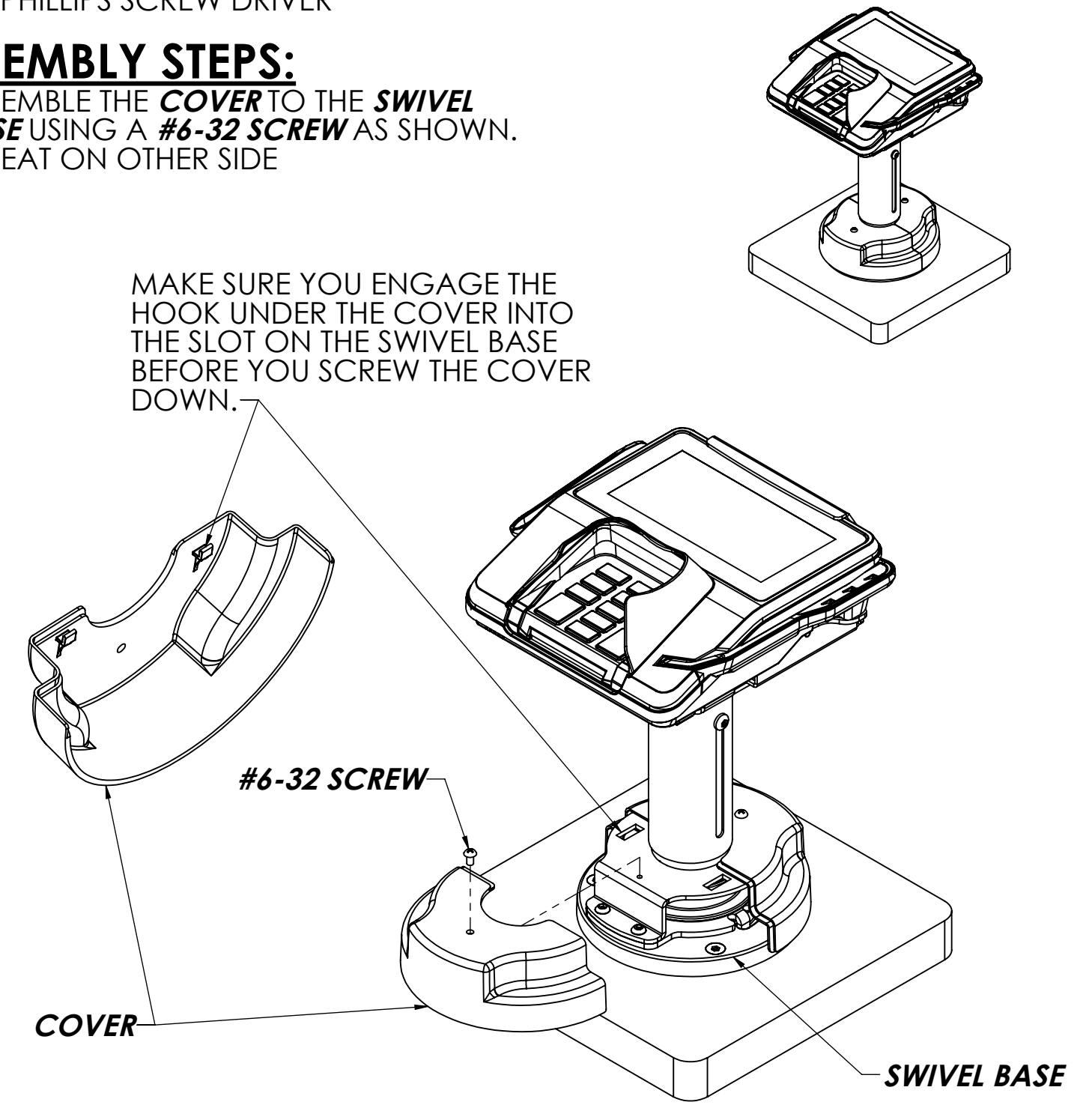
TOOL LIST:

- #2 PHILLIPS SCREW DRIVER

STEPS 7-8

ASSEMBLY STEPS:

- ASSEMBLE THE **COVER** TO THE **SWIVEL BASE** USING A **#6-32 SCREW** AS SHOWN.
- REPEAT ON OTHER SIDE



B		06/20/16	JEB	SCB
REV.	DESCRIPTION	DATE	BY	CHK'D
DRAWN	Z. GRAGE	DATE	2/16/2015	
CHECKED				
DIMS. AND TOLERANCES PER ASME Y14.5 - 1994 UNLESS OTHERWISE SPECIFIED DIMENSIONS ARE IN INCHES TOLERANCES ARE:		TITLE		
FRACTIONAL	± 1/32	CUSTOMER ASSEMBLY, TELESCOPING STAND, LOCKING WITH ANTI-SKIMMING VERIFONE MX915		
2 PLC. DEC.	± .03	DO NOT SCALE DRAWING		
3 PLC. DEC.	± .010	MATERIAL	N/A	
ANGULAR	± 0°30'	FINISH	N/A	
		SIZE	C	
		DWG. NO.	367-3217	REV. B
				SHEET 1 OF 1

THE INFORMATION CONTAINED IN THIS DRAWING IS THE SOLE PROPERTY OF HAVIS AND REPRODUCTION IN PART OR IN WHOLE WITHOUT THE WRITTEN PERMISSION OF HAVIS IS PROHIBITED.