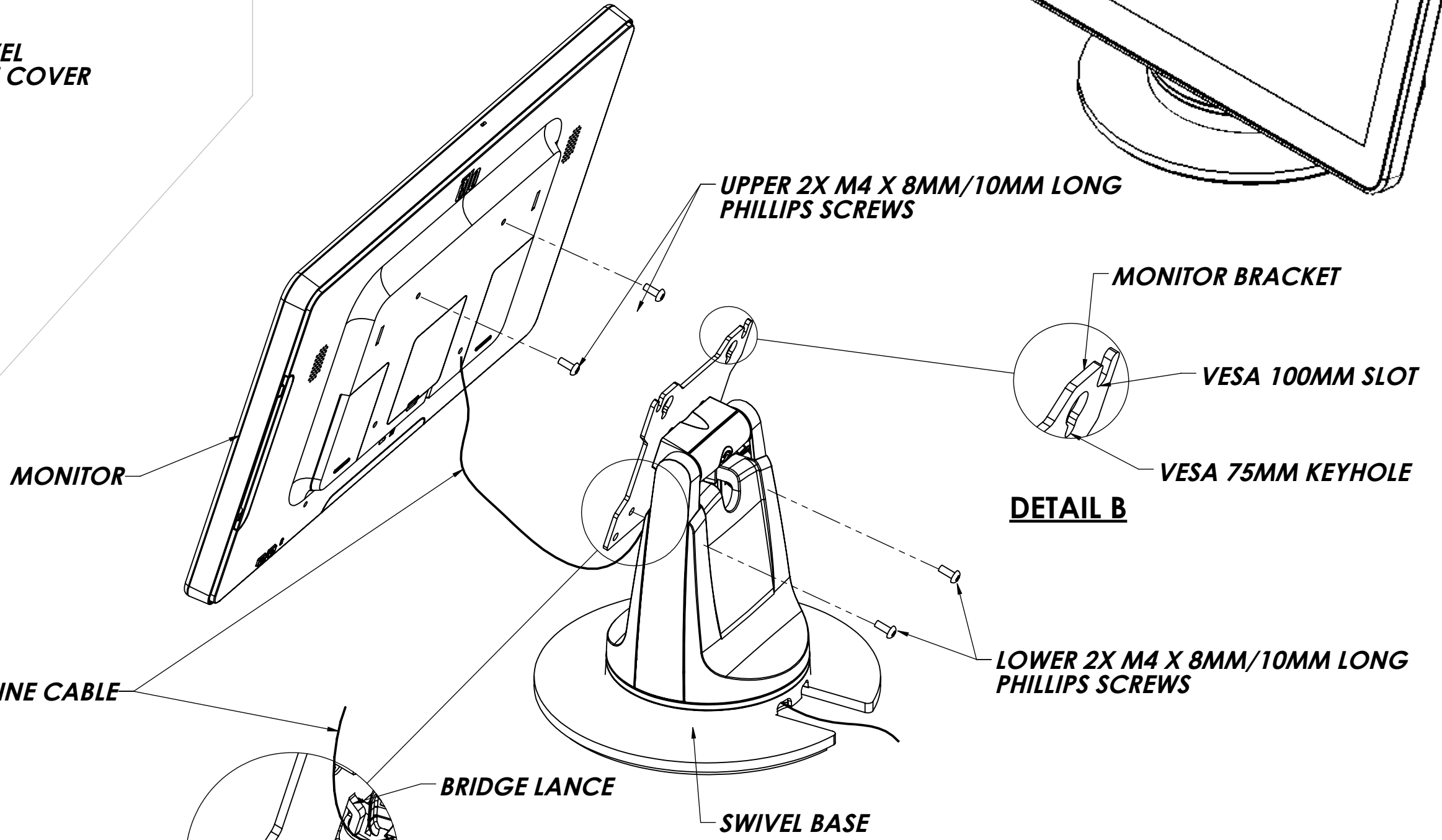
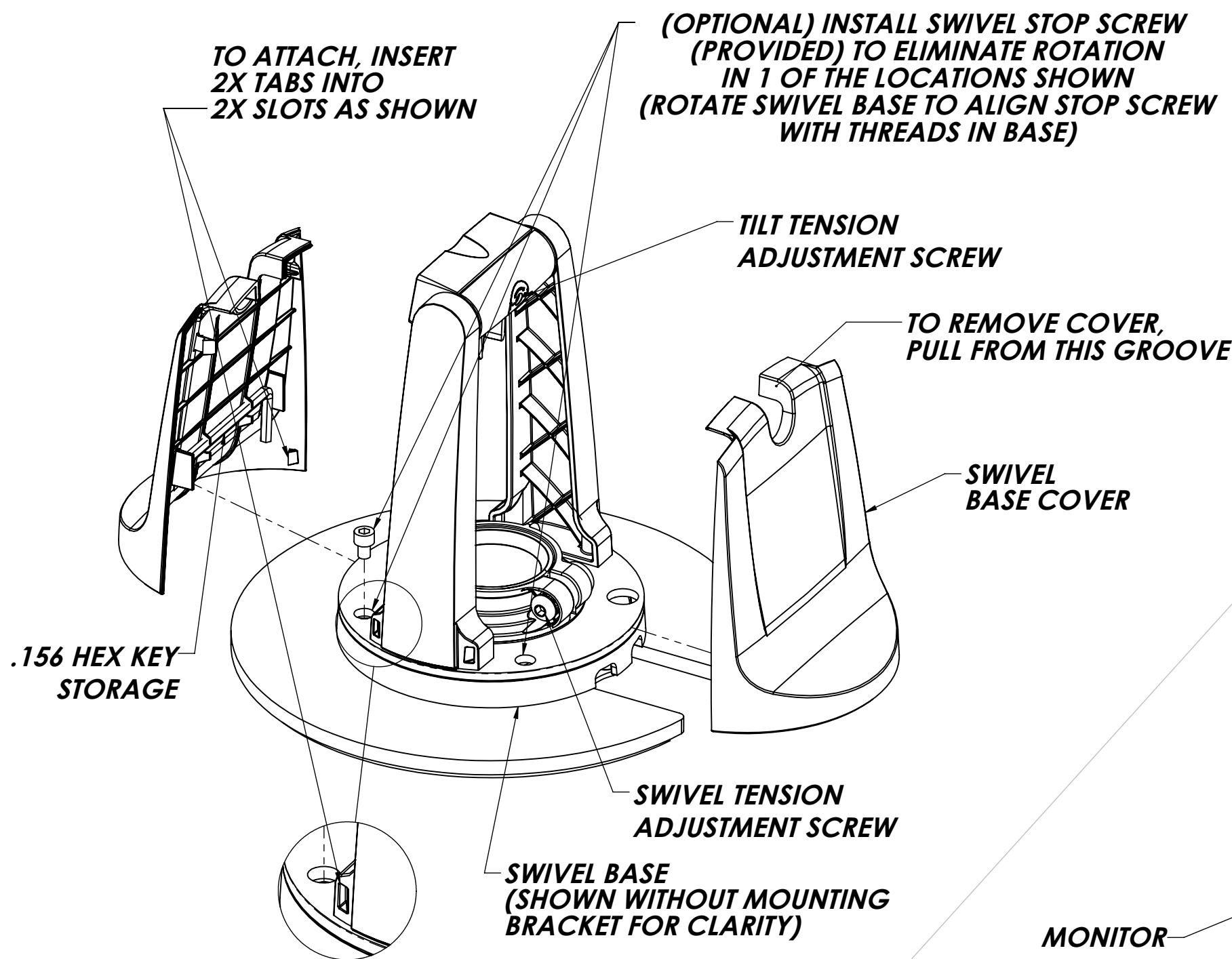
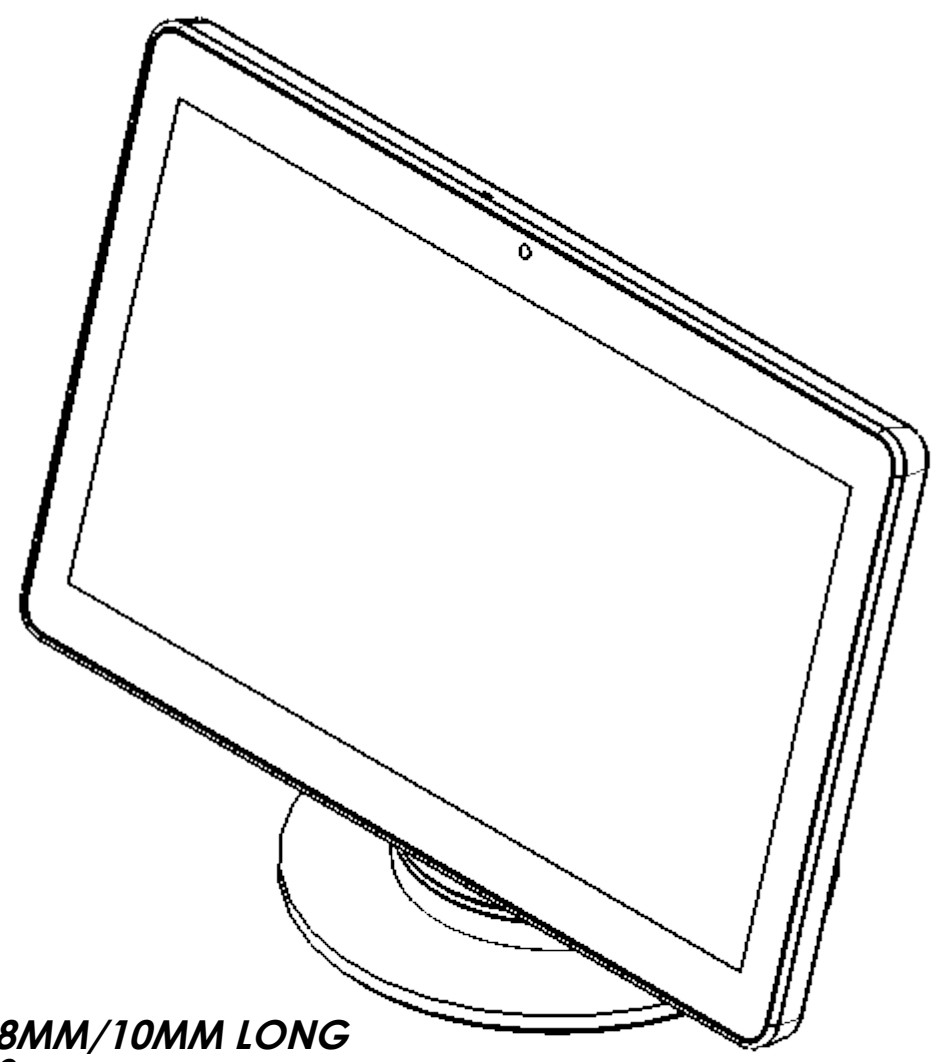
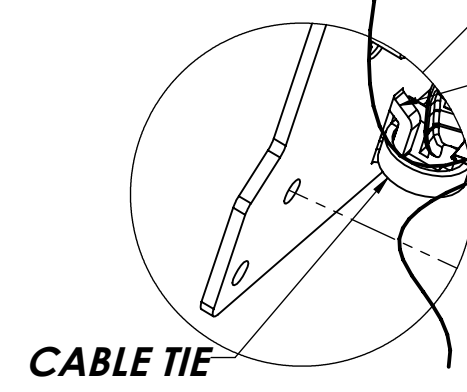


DETAIL A

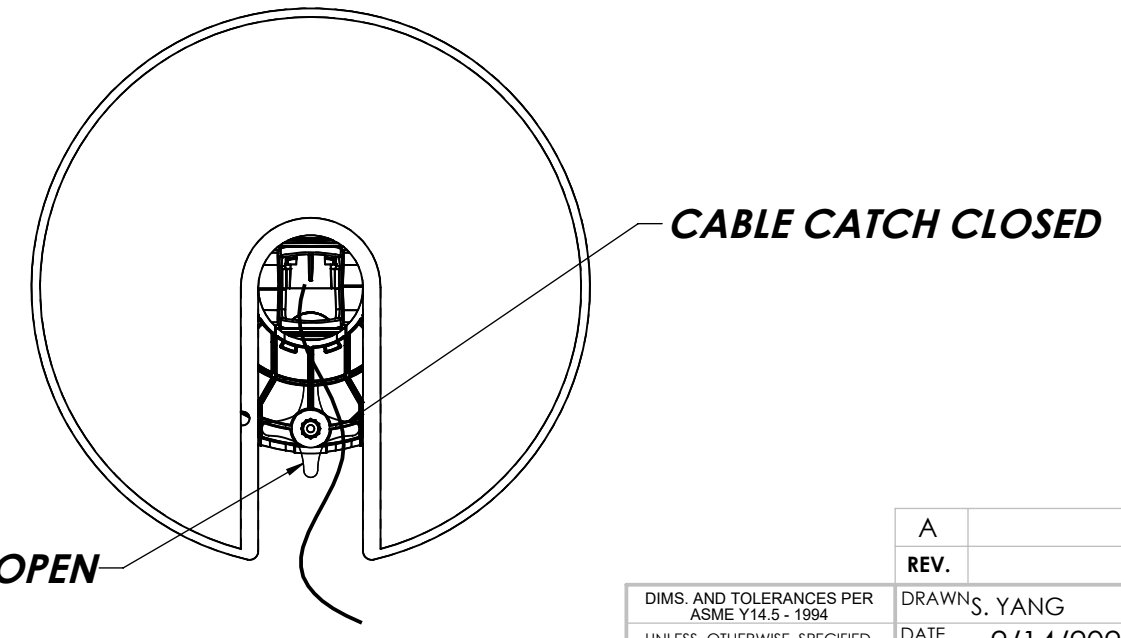
INSTALLATION INSTRUCTIONS



DETAIL B



DETAIL C



DETAIL D
BOTTOM OF SWIVEL STAND

TOOL LIST:
1. #2 PHILLIPS SCREW OR DRILL DRIVER

ASSEMBLY STEPS:

1. ASSEMBLE THE **UPPER 2X M4 X 8MM/10MM LONG PHILLIPS SCREWS** INTO TOP HOLES OF **MONITOR** LEAVING 1/8" OF SPACE BETWEEN THE BACK OF THE **MONITOR** AND THE SCREW HEAD.
2. PLACE THE **MONITOR** ONTO **MONITOR BRACKET** USING THE **VESA 100MM SLOT** OR **VESA 75MM KEYHOLE** PATTERN FOR BOTH SIDES. SEE: **DETAIL B**
3. INSTALL THE **LOWER 2X M4 X 8MM/10MM LONG PHILLIPS SCREWS** AND TIGHTEN THE **UPPER 2X M4 X 8MM/10MM LONG PHILLIPS SCREWS**.
4. ROUTE **MONITOR CABLE** THROUGH BOTTOM AND OUT THE FRONT OF THE **SWIVEL BASE**. ATTACH **MONITOR CABLE** TO **BRIDGE LANCE** WITH **CABLE TIE** AS SHOWN IN **DETAIL C**. ROTATE **CABLE CATCH** CLOSED AS SHOWN IN **DETAIL D**.
5. TO ADJUST THE SWIVEL TENSION, TIGHTEN THE **SWIVEL TENSION ADJUSTMENT SCREW** TO INCREASE TENSION OR LOOSEN **SWIVEL TENSION ADJUSTMENT SCREW** TO DECREASE TENSION.
6. TO ADJUST THE TILT TENSION, TIGHTEN THE **TILT TENSION ADJUSTMENT SCREW** TO INCREASE TENSION OR LOOSEN **TILT TENSION ADJUSTMENT SCREW** TO DECREASE TENSION.
7. ATTACH THE **SWIVEL BASE COVERS** TO THE **SWIVEL BASE** AS SHOWN IN **DETAIL A**.

REV.	DESCRIPTION	DATE	BY	CHK'D
A		02/14/22	SY	

DIMS. AND TOLERANCES PER ASME Y14.5 - 1994 UNLESS OTHERWISE SPECIFIED DIMENSIONS ARE IN INCHES TOLERANCES ARE:		DRAWN: S. YANG DATE: 2/14/2022 CHECKED: DATE: DO NOT SCALE DRAWING MATERIAL: - FINISH: -		
FRACTIONAL ± 1/32 2 PLC. DEC. ± .03 3 PLC. DEC. ± .010 ANGULAR ± 0°30'	TITLE DISPLAY MOUNT, SINGLE VESA, STANDARD DUTY, FREE STANDING BASE		SIZE C	
THE INFORMATION CONTAINED IN THIS DRAWING IS THE SOLE PROPERTY OF HAVIS AND REPRODUCTION IN PART OR IN WHOLE WITHOUT THE WRITTEN PERMISSION OF HAVIS IS PROHIBITED.			DWG. NO. DM-10-102	REV. A SHEET 1 OF 1